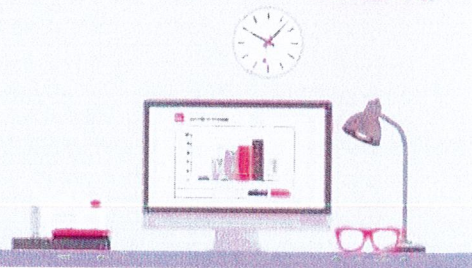


Christine

SMSF Gateway Service



**A contribution to  
your Super fund**



Dear **Christine MUSOLINO**,

We're pleased to advise you that the Australia Post SMSF Gateway Service has received a superannuation contribution message from **CLINICAL TRIALS SA PTY LTD** on **15/04/2021 12:48:00 PM**.

Your employer should have made a contribution to your nominated bank account with a payment reference number of **QUICKSPR2937895019**.

The message contains the following types of contributions to the **EM EARTHMOVERS SUPERANNUATION FUND NO2** Fund:

Superannuation Guarantee	\$520.13
--------------------------	----------

To view this contribution message in detail, log in to your account at [auspost.com.au/smsf](https://auspost.com.au/smsf)

If any of the details above are incorrect, please let us know immediately by emailing [superannuation@auspost.com.au](mailto:superannuation@auspost.com.au)

Kind Regards

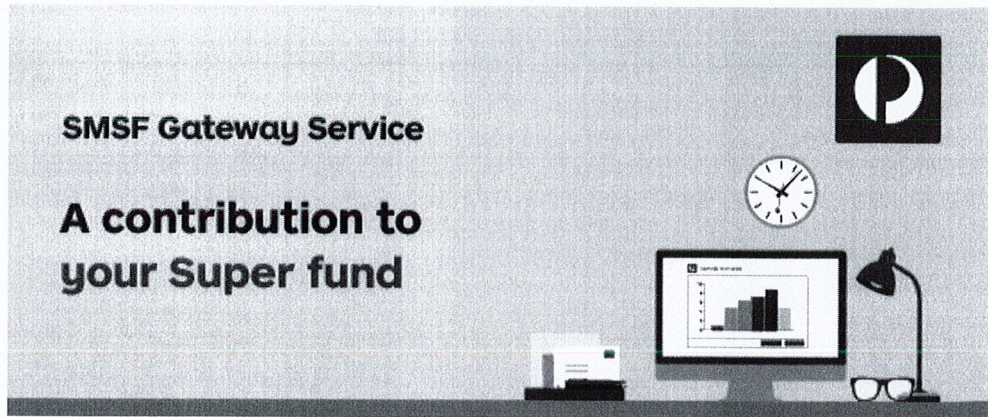
The SMSF Gateway Team

You have received this correspondence to notify you of a contribution data message having been received by the SMSF Gateway Service provided by Australia Post. Your personal information is managed in accordance with Australia Post's privacy policy which is available at [www.auspost.com.au](http://www.auspost.com.au). Australia Post may only disclose the information provided by you if required or authorized by law, or in accordance with our privacy policy. You may obtain access to your personal information by contacting the Privacy Contact Officer, Australia Post, GPO Box 1777, Melbourne, Vic, 3001.

Australia Post does not represent, warrant or guarantee that the integrity of this email communication has been maintained nor that the communication is free of errors, viruses or interference.

[Terms & conditions](#) | [Privacy Policy](#) | [Help & support](#)

Christine



Dear **Christine MUSOLINO**,

We're pleased to advise you that the Australia Post SMSF Gateway Service has received a superannuation contribution message from **CLINICAL TRIALS SA PTY LTD** on **12/04/2021 12:08:48 PM**.

Your employer should have made a contribution to your nominated bank account with a payment reference number of **QUICKSPR2874206809**.

The message contains the following types of contributions to the **EM EARTHMOVERS SUPERANNUATION FUND NO2** Fund:

Superannuation Guarantee

\$632.70

To view this contribution message in detail, log in to your account at [auspost.com.au/smsf](https://auspost.com.au/smsf)

If any of the details above are incorrect, please let us know immediately by emailing [superannuation@auspost.com.au](mailto:superannuation@auspost.com.au)

Kind Regards

The SMSF Gateway Team

You have received this correspondence to notify you of a contribution data message having been received by the SMSF Gateway Service provided by Australia Post. Your personal information is managed in accordance with Australia Post's privacy policy which is available at [www.auspost.com.au](https://www.auspost.com.au). Australia Post may only disclose the information provided by you if required or authorized by law, or in accordance with our privacy policy. You may obtain access to your personal information by contacting the Privacy Contact Officer, Australia Post, GPO Box 1777, Melbourne, Vic, 3001.

Australia Post does not represent, warrant or guarantee that the integrity of this email communication has been maintained nor that the communication is free of errors, viruses or interference.

[Terms & conditions](#) | [Privacy Policy](#) | [Help & support](#)

**SMSF Gateway Service**



**A contribution to  
your Super fund**



Dear Christine MUSOLINO ,

We're pleased to advise you that the Australia Post SMSF Gateway Service has received a superannuation contribution message from **CLINICAL TRIALS SA PTY LTD** on 16/10/2020 11:33:47 AM.

Your employer should have made a contribution to your nominated bank account with a payment reference number of **QUICKSPR2800735685**.

The message contains the following types of contributions to the **EM EARTHMOVERS SUPERANNUATION FUND NO2** Fund:

Superannuation Guarantee

\$638.40

To view this contribution message in detail, log in to your account at [auspost.com.au/smsf](https://auspost.com.au/smsf)

If any of the details above are incorrect, please let us know immediately by emailing [superannuation@auspost.com.au](mailto:superannuation@auspost.com.au)

Kind Regards

The SMSF Gateway Team

You have received this correspondence to notify you of a contribution data message having been received by the SMSF Gateway Service provided by Australia Post. Your personal information is managed in accordance with Australia Post's privacy policy which is available at [www.auspost.com.au](http://www.auspost.com.au). Australia Post may only disclose the information provided by you if required or authorized by law, or in accordance with our privacy policy. You may obtain access to your personal information by contacting the Privacy Contact Officer, Australia Post, GPO Box 1777, Melbourne, Vic, 3001.

Australia Post does not represent, warrant or guarantee that the integrity of this email communication has been maintained nor that the communication is free of errors, viruses or interference.

[Terms & conditions](#) | [Privacy Policy](#) | [Help & support](#)

SMSF Gateway Service

A contribution to  
your Super fund



Dear Christine MUSOLINO,

We're pleased to advise you that the Australia Post SMSF Gateway Service has received a superannuation contribution message from CLINICAL TRIALS SA PTY LTD on 4/08/2020 10:10:46 AM.

Your employer should have made a contribution to your nominated bank account with a payment reference number of QUICKSPR2748376778.

The message contains the following types of contributions to the EM EARTHMOVERS SUPERANNUATION FUND NO2 Fund:

Superannuation Guarantee

\$524.40

To view this contribution message in detail, log in to your account at [auspost.com.au/smsf](https://auspost.com.au/smsf)

If any of the details above are incorrect, please let us know immediately by emailing [superannuation@auspost.com.au](mailto:superannuation@auspost.com.au)

Kind Regards

The SMSF Gateway Team

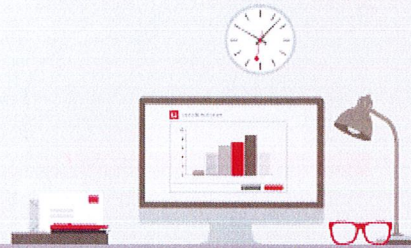
You have received this correspondence to notify you of a contribution data message having been received by the SMSF Gateway Service provided by Australia Post. Your personal information is managed in accordance with Australia Post's privacy policy which is available at [www.auspost.com.au](http://www.auspost.com.au). Australia Post may only disclose the information provided by you if required or authorized by law, or in accordance with our privacy policy. You may obtain access to your personal information by contacting the Privacy Contact Officer, Australia Post, GPO Box 1777, Melbourne, Vic. 3001.

Australia Post does not represent, warrant or guarantee that the integrity of this email communication has been maintained nor that the communication is free of errors, viruses or interference.

[Terms & conditions](#) | [Privacy Policy](#) | [Help & support](#)

**SMSF Gateway Service**

**A contribution to  
your Super fund**



Dear **Christine MUSOLINO**,

We're pleased to advise you that the Australia Post SMSF Gateway Service has received a superannuation contribution message from **CLINICAL TRIALS SA PTY LTD** on **4/08/2020** 10:10:59 AM.

Your employer should have made a contribution to your nominated bank account with a payment reference number of **QUICKSPR2748376780**.

The message contains the following types of contributions to the **EM EARTHMOVERS SUPERANNUATION FUND NO2** Fund:

Superannuation Guarantee

**\$658.35**

To view this contribution message in detail, log in to your account at [auspost.com.au/smsf](https://auspost.com.au/smsf)

If any of the details above are incorrect, please let us know immediately by emailing [superannuation@auspost.com.au](mailto:superannuation@auspost.com.au)

Kind Regards

The SMSF Gateway Team

You have received this correspondence to notify you of a contribution data message having been received by the SMSF Gateway Service provided by Australia Post. Your personal information is managed in accordance with Australia Post's privacy policy which is available at [www.auspost.com.au](http://www.auspost.com.au). Australia Post may only disclose the information provided by you if required or authorized by law, or in accordance with our privacy policy. You may obtain access to your personal information by contacting the Privacy Contact Officer, Australia Post, GPO Box 1777, Melbourne, Vic, 3001.

Australia Post does not represent, warrant or guarantee that the integrity of this email communication has been maintained nor that the communication is free of errors, viruses or interference.

[Terms & conditions](#) | [Privacy Policy](#) | [Help & support](#)

**SMSF Gateway Service**



**A contribution to  
your Super fund**



Dear **Christine MUSOLINO**,

We're pleased to advise you that the Australia Post SMSF Gateway Service has received a superannuation contribution message from **CLINICAL TRIALS SA PTY LTD** on **4/08/2020 10:10:51 AM**.

Your employer should have made a contribution to your nominated bank account with a payment reference number of **QUICKSPR2748376781**.

The message contains the following types of contributions to the **EM EARTHMOVERS SUPERANNUATION FUND NO2** Fund:

Superannuation Guarantee

**\$1,117.22**

To view this contribution message in detail, log in to your account at [auspost.com.au/smsf](https://auspost.com.au/smsf)

If any of the details above are incorrect, please let us know immediately by emailing [superannuation@auspost.com.au](mailto:superannuation@auspost.com.au)

Kind Regards

The SMSF Gateway Team

You have received this correspondence to notify you of a contribution data message having been received by the SMSF Gateway Service provided by Australia Post. Your personal information is managed in accordance with Australia Post's privacy policy which is available at [www.auspost.com.au](http://www.auspost.com.au). Australia Post may only disclose the information provided by you if required or authorized by law, or in accordance with our privacy policy. You may obtain access to your personal information by contacting the Privacy Contact Officer, Australia Post, GPO Box 1777, Melbourne, Vic. 3001.

Australia Post does not represent, warrant or guarantee that the integrity of this email communication has been maintained nor that the communication is free of errors, viruses or interference.

[Terms & conditions](#) | [Privacy Policy](#) | [Help & support](#)

## SMSF Gateway Service



### A contribution to your Super fund



Dear **Christine MUSOLINO**,

We're pleased to advise you that the Australia Post SMSF Gateway Service has received a superannuation contribution message from **CLINICAL TRIALS SA PTY LTD** on 4/08/2020 10:11:03 AM.

Your employer should have made a contribution to your nominated bank account with a payment reference number of **QUICKSPR2748376779**.

The message contains the following types of contributions to the **EM EARTHMOVERS SUPERANNUATION FUND NO2** Fund:

Superannuation Guarantee

**\$666.91**

To view this contribution message in detail, log in to your account at [auspost.com.au/smsf](https://auspost.com.au/smsf)

If any of the details above are incorrect, please let us know immediately by emailing [superannuation@auspost.com.au](mailto:superannuation@auspost.com.au)

Kind Regards

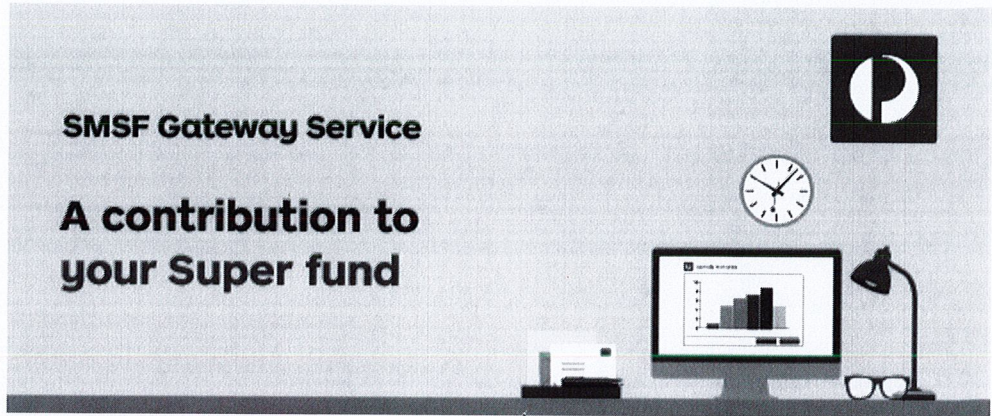
The SMSF Gateway Team

You have received this correspondence to notify you of a contribution data message having been received by the SMSF Gateway Service provided by Australia Post. Your personal information is managed in accordance with Australia Post's privacy policy which is available at [www.auspost.com.au](http://www.auspost.com.au). Australia Post may only disclose the information provided by you if required or authorized by law, or in accordance with our privacy policy. You may obtain access to your personal information by contacting the Privacy Contact Officer, Australia Post, GPO Box 1777, Melbourne, Vic. 3001.

Australia Post does not represent, warrant or guarantee that the integrity of this email communication has been maintained nor that the communication is free of errors, viruses or interference.

[Terms & conditions](#) | [Privacy Policy](#) | [Help & support](#)

June 2021  
Christine  
"Clinical Trials"



Dear Christine MUSOLINO,

We're pleased to advise you that the Australia Post SMSF Gateway Service has received a superannuation contribution message from **CLINICAL TRIALS SA PTY LTD** on **14/07/2021 10:28:02 AM**.

Your employer should have made a contribution to your nominated bank account with a payment reference number of **QUICKSPR3005119579**.

The message contains the following types of contributions to the **EM EARTHMOVERS SUPERANNUATION FUND NO2** Fund:

Superannuation Guarantee	\$558.60
--------------------------	----------

To view this contribution message in detail, log in to your account at [auspost.com.au/smsf](https://auspost.com.au/smsf)

If any of the details above are incorrect, please let us know immediately by emailing [superannuation@auspost.com.au](mailto:superannuation@auspost.com.au)

Kind Regards

The SMSF Gateway Team

You have received this correspondence to notify you of a contribution data message having been received by the SMSF Gateway Service provided by Australia Post. Your personal information is managed in accordance with Australia Post's privacy policy which is available at [www.auspost.com.au](https://www.auspost.com.au). Australia Post may only disclose the information provided by you if required or authorized by law, or in accordance with our privacy policy. You may obtain access to your personal information by contacting the Privacy Contact Officer, Australia Post, GPO Box 1777, Melbourne, Vic, 3001.

Australia Post does not represent, warrant or guarantee that the integrity of this email communication has been maintained nor that the communication is free of errors, viruses or interference.

---

[Terms & conditions](#) | [Privacy Policy](#) | [Help & support](#)