

Imaged Document Cover Sheet

The document following this cover sheet is an imaged document supplied by LANDATA®, Land Victoria.

Document Type	plan
Document Identification	LP057608
Number of Pages (excluding this cover sheet)	2
Document Assembled	28/03/2013 13:23

Copyright and disclaimer notice:

© State of Victoria. This publication is copyright. No part may be reproduced by any process except in accordance with the provisions of the Copyright Act and for the purposes of Section 32 of the Sale of Land Act 1962 or pursuant to a written agreement. The information is only valid at the time and in the form obtained from the LANDATA® System. The State of Victoria accepts no responsibility for any subsequent release, publication or reproduction of the information.

The document is invalid if this cover sheet is removed or altered.

LP57608
EDITION 1
 PLAN MAY BE LODGED 2/13/163

HOUSING COMMISSION VICTORIA
BENALLA ESTATE
 PLAN OF SUBDIVISION OF
 CROWN ALLOTMENTS 12&15
 AND PART OF CROWN ALLOTMENTS 10,13,14,16 & 17 SECTION 15
PARISH OF BENALLA
 COUNTY OF MOIRA

VOL. 5950 FOL. 958
 VOL. 8341 FOL. 853
Measurements are in Feet & Inches
 Conversion Factor
 FEET X 0.3048 = METRES

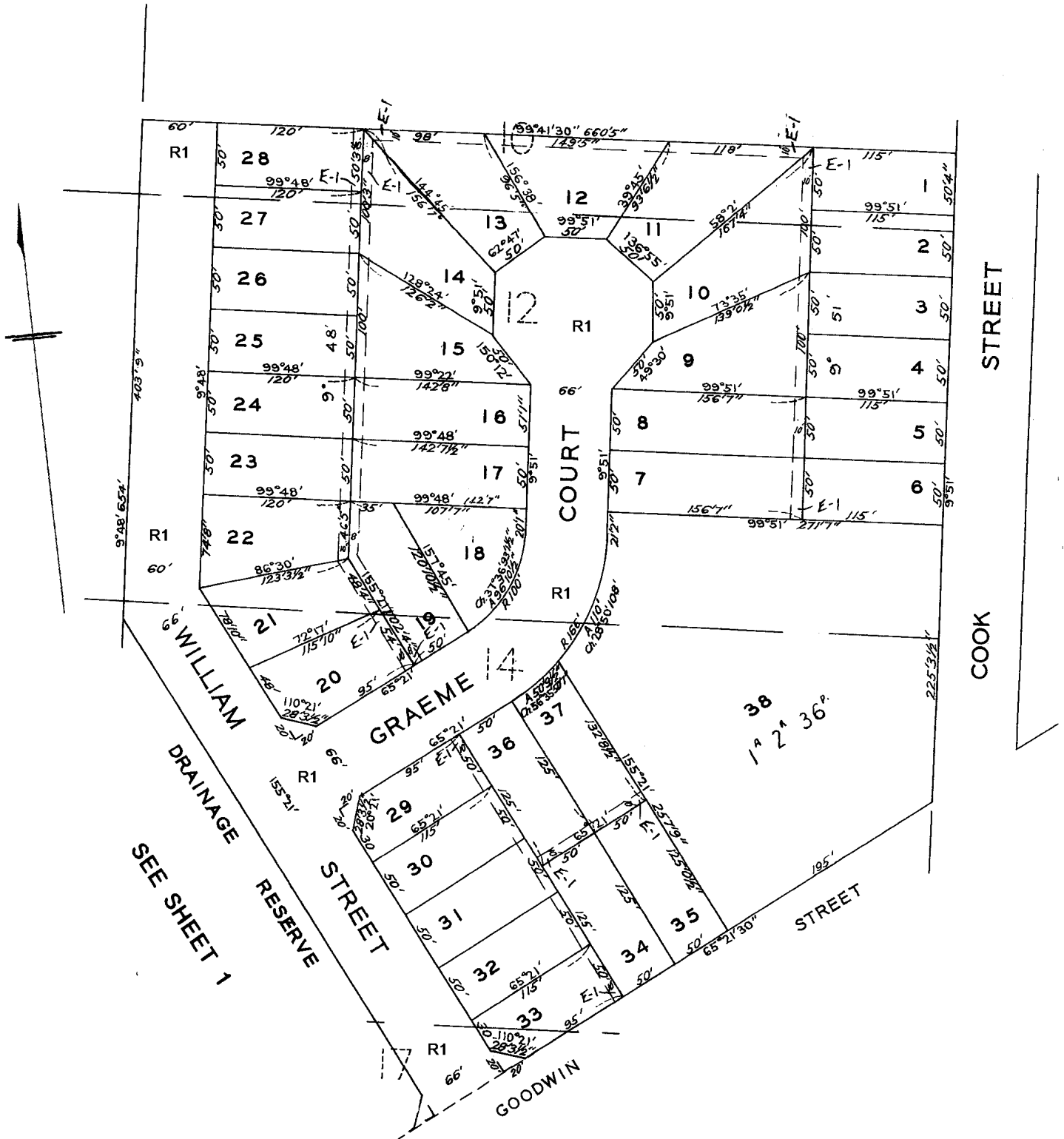
NOTE LOT 39 is omitted.

COLOUR CODE
 E-1 = BLUE
 E-2 = GREEN
 R1 & R2 = BROWN

APPROPRIATIONS
 THE LAND COLOURED BLUE
 IS APPROPRIATED OR SET APART FOR
 EASEMENTS OF DRAINAGE & SEWERAGE
 THE LAND COLOURED BROWN
 IS APPROPRIATED OR SET APART FOR
 EASEMENTS OF WAY & DRAINAGE
 THE LAND COLOURED GREEN
 IS APPROPRIATED OR SET APART FOR
 EASEMENTS OF DRAINAGE



.....2.....SHEETS
 SHEET...../.....



SEE SHEET 1