



CA/NCA OA/LIAB INC/EXP/TAX

	Source document Link	Reconciliation Link	Note Information	See Excel File	Checked	Auditor Check	Note Instruction
<b>Cash at Bank</b>							
	Click	Click					
	Click	Click					
	Click	Click					
	Click	Click					
	Click	Click					
	Click	Click					
	Click	Click					
	Click	Click					
<b>Listed Securites</b>							
	Click	Click					
	Click	Click					
	Click	Click					
	Click	Click					
	Click	Click					
	Click	Click					
	Click	Click					
<b>Listed/ Non Listed Trusts/ Partnership</b>							
	Click	Click					
	Click	Click					
	Click	Click					
	Click	Click					
	Click	Click					
	Click	Click					
	Click	Click					
<b>Property</b>							
	Click	Click					
	Click	Click					
	Click	Click					
	Click	Click					
	Click	Click					
	Click	Click					

CA/NCA OA/LIAB INC/EXP/TAX

	Source Document Link	Reconciliation Link	Note Information	See Excel File	Checked	Auditor Check	Note Instruction
<b>Other Assets</b>							
Distributions Receivable	Click	Click					
	Click	Click					
	Click	Click					
	Click	Click					
	Click	Click					
	Click	Click					
	Click	Click					
<b>Liabilities</b>							
	Click	Click					
	Click	Click					
	Click	Click					
	Click	Click					
	Click	Click					
	Click	Click					
	Click	Click					
	Click	Click					
	Click	Click					
	Click	Click					
	Click	Click					
	Click	Click					
	Click	Click					
	Click	Click					

CA/NCA OALIAB INC/EXP/TAX

	Source document Link	Reconciliation Link	Note Information	See Excel File	Checked	Auditor Check	Note Instruction
<b>Income</b>							
	Click	Click					
	Click	Click					
	Click	Click					
	Click	Click					
	Click	Click					
	Click	Click					
	Click	Click					
	Click	Click					
	Click	Click					
	Click	Click					
<b>Contributions</b>							
	Click	Click					
	Click	Click					
	Click	Click					
	Click	Click					
	Click	Click					
<b>Expenses</b>							
	Click	Click					
	Click	Click					
	Click	Click					
	Click	Click					
	Click	Click					
	Click	Click					
	Click	Click					
	Click	Click					
	Click	Click					
	Click	Click					
	Click	Click					
	Click	Click					
	Click	Click					
<b>Tax Allocation / Member Statements</b>							
	Click	Click					
	Click	Click					
	Click	Click					
	Click	Click					



# SHSM Super Fund Investment Summary Report

As at 30 June 2022

Investment	Units	Market Price	Market Value	Average Cost	Accounting Cost	Unrealised Gain/(Loss)	Gain/(Loss)%	Portfolio Weight%
<b>Cash/Bank Accounts</b>								
NAB Business Everyday a/c 93-373-7223		14,776.560000	14,776.56	14,776.56	14,776.56			10.96 %
NAB Trade a/c 303329989		14,168.410000	14,168.41	14,168.41	14,168.41			10.51 %
			<b>28,944.97</b>		<b>28,944.97</b>			<b>21.47 %</b>
<b>Derivatives (Options, Hybrids, Future Contracts)</b>								
CPHO.AX Creso Pharma Limited Options Expiring 02-Nov-2024	334.00	0.005000	1.67	0.00	0.00	1.67	0.00 %	0.00 %
			<b>1.67</b>		<b>0.00</b>	<b>1.67</b>		<b>0.00 %</b>
<b>Managed Investments (Australian)</b>								
AUS0112AU Aust Unity Hcare Prop Trst Wsale Un	17,260.53	2.694000	46,499.87	1.87	32,244.25	14,255.62	44.21 %	34.49 %
			<b>46,499.87</b>		<b>32,244.25</b>	<b>14,255.62</b>	<b>44.21 %</b>	<b>34.49 %</b>
<b>Shares in Listed Companies (Australian)</b>								
AKE.AX Allkem Limited	1,830.00	10.310000	18,867.30	5.45	9,973.95	8,893.35	89.17 %	13.99 %
CPH.AX Creso Pharma Limited	1,000.00	0.035000	35.00	0.54	544.01	(509.01)	(93.57) %	0.03 %
NTL.AX New Talisman Gold Mines Limited	65,670.00	0.001500	98.50	0.02	1,000.00	(901.50)	(90.15) %	0.07 %
PLS.AX Pilbara Minerals Limited	5,620.00	2.290000	12,869.80	0.88	4,928.24	7,941.56	161.14 %	9.55 %
			<b>31,870.60</b>		<b>16,446.20</b>	<b>15,424.40</b>	<b>93.79 %</b>	<b>23.64 %</b>
<b>Shares in Listed Companies (Overseas)</b>								
SLV.ARCX BlackRock Institutional Trust Company N.A. - BTC iShares Silver Trust	100.00	27.057600	2,705.76	24.82	2,482.17	223.59	9.01 %	2.01 %
HL.NYE Hecla Mining Co.	1,028.00	5.690200	5,849.53	4.77	4,902.61	946.92	19.31 %	4.34 %
HEPA.NDQ Hepion Pharmaceuticals Inc	2,000.00	0.831000	1,662.00	1.73	3,450.01	(1,788.01)	(51.83) %	1.23 %
NVDA.NDQ NVIDIA Corp - Ordinary Shares	10.00	220.046500	2,200.46	268.89	2,688.86	(488.40)	(18.16) %	1.63 %
TTT.ARCX ProShares Trust - ProShares UltraPro Short 20+ Year Treasury -3x Shares	110.00	83.814800	9,219.63	47.28	5,200.59	4,019.04	77.28 %	6.84 %
GLD.ARCX SPDR Gold Trust Shs	24.00	244.534800	5,868.84	255.24	6,125.83	(256.99)	(4.20) %	4.35 %
			<b>27,506.22</b>		<b>24,850.07</b>	<b>2,656.15</b>	<b>10.69 %</b>	<b>20.40 %</b>
Market price of all securities are autofeeded in BGL360								

**SHSM Super Fund**

**Investment Summary Report**

As at 30 June 2022

Investment	Units	Market Price	Market Value	Average Cost	Accounting Cost	Unrealised Gain/(Loss)	Gain/(Loss)%	Portfolio Weight%
			134,823.33		102,485.49	32,337.84	31.55 %	100.00 %



## NAB Business Everyday Account

For further information call 13 22 65 for Personal Accounts or 13 10 12 for Business Accounts.

A 2-186  
SHSM PTY LTD ATF SHSM SUPER FUND  
16 TELOPEA AVE  
STRATHFIELD NSW 2135

### Account Balance Summary

Opening balance	\$2,799.28	Cr
Total credits	\$2,903.55	
Total debits	\$4,000.00	
<b>Closing balance</b>	<b>\$1,702.83</b>	<b>Cr</b>

**Statement starts 1 July 2021**  
**Statement ends 30 July 2021**

### Outlet Details

Carlingford  
Shop 116, Carlingford Court Shopping CEN  
Cnr Pennant Hills & Carlingfor, Carlingford NSW 2118

### Account Details

SHSM PTY LTD ATF SHSM SUPER FUND  
BUSINESS EVERYDAY AC  
BSB number 082-186  
Account number 93-373-7223

### Transaction Details

Date	Particulars	Debits	Credits	Balance
1 Jul 2021	Brought forward			2,799.28 Cr
15 Jul 2021	20576294/DISTRIB Australian Unity 411595.....		442.56	3,241.84 Cr
26 Jul 2021	PC06C045-6078037 Superchoice P/L 395276.....		866.40	4,108.24 Cr
28 Jul 2021	Internet Transfer Share Trading.....	4,000.00		108.24 Cr
29 Jul 2021	QUICKSPR3014920288 Quicksuper 361578.....		1,594.59	1,702.83 Cr

### Summary of Government Charges

Government	From 1 July to date	Last year to 30 June
Withholding tax	\$0.00	\$0.00
Bank Account Debit (BAD) tax	\$0.00	\$0.00

Bank Accounts Debits (BAD) Tax or State Debits Duty has been abolished for all states & territories effective 1/7/2005. Any amount shown on this statement applies to debits processed on or before 30/06/2005.

For further information on any applicable rebates, fees or government charges, please refer to the NAB's "A Guide to Fees & Charges" booklet. Please retain this statement for taxation purposes

### Explanatory Notes

Please check all entries and report any apparent error or possible unauthorised transaction immediately.

We may subsequently adjust debits and credits, which may result in a change to your account balance to accurately reflect the obligations between us.

For information on resolving problems or disputes, contact us on 1800 152 015, or ask at any NAB branch.

211/34/01/M033311/S076974/L153947





## NAB Business Everyday Account

For further information call 13 22 65 for Personal Accounts or 13 10 12 for Business Accounts.



A 2-186  
SHSM PTY LTD ATF SHSM SUPER FUND  
16 TELOPEA AVE  
STRATHFIELD NSW 2135

### Account Balance Summary

Opening balance	\$1,702.83 Cr
Total credits	\$912.00
Total debits	\$1,440.74
<b>Closing balance</b>	<b>\$1,174.09 Cr</b>

**Statement starts 31 July 2021**  
**Statement ends 31 August 2021**

### Outlet Details

Carlingford  
Shop 116, Carlingford Court Shopping CEN  
Cnr Pennant Hills & Carlingfor, Carlingford NSW 2118

### Account Details

SHSM PTY LTD ATF SHSM SUPER FUND  
BUSINESS EVERYDAY AC  
BSB number 082-186  
Account number 93-373-7223

### Transaction Details

Date	Particulars	Debits	Credits	Balance
31 Jul 2021	Brought forward			1,702.83 Cr
26 Aug 2021	PC06C044-6088414 Superchoice P/L			
	395276.....		912.00	
	02970982/00001 Asteron Life			
	367806.....	1,440.74		1,174.09 Cr

### Summary of Government Charges

Government	From 1 July to date	Last year to 30 June
Withholding tax	\$0.00	\$0.00
Bank Account Debit (BAD) tax	\$0.00	\$0.00

Bank Accounts Debits (BAD) Tax or State Debits Duty has been abolished for all states & territories effective 1/7/2005. Any amount shown on this statement applies to debits processed on or before 30/06/2005.

For further information on any applicable rebates, fees or government charges, please refer to the NAB's "A Guide to Fees & Charges" booklet. Please retain this statement for taxation purposes

### Explanatory Notes

Please check all entries and report any apparent error or possible unauthorised transaction immediately.

We may subsequently adjust debits and credits, which may result in a change to your account balance to accurately reflect the obligations between us.

For information on resolving problems or disputes, contact us on 1800 152 015, or ask at any NAB branch.





## NAB Business Everyday Account

For further information call 13 22 65 for Personal Accounts or 13 10 12 for Business Accounts.

A 2-186  
SHSM PTY LTD ATF SHSM SUPER FUND  
16 TELOPEA AVE  
STRATHFIELD NSW 2135

### Account Balance Summary

Opening balance	\$1,174.09	Cr
Total credits	\$1,922.61	
Total debits	\$715.54	
<b>Closing balance</b>	<b>\$2,381.16</b>	<b>Cr</b>

**Statement starts 1 September 2021**  
**Statement ends 30 September 2021**

### Outlet Details

Carlingford  
Shop 116, Carlingford Court Shopping CEN  
Cnr Pennant Hills & Carlingfor, Carlingford NSW 2118

### Account Details

SHSM PTY LTD ATF SHSM SUPER FUND  
BUSINESS EVERYDAY AC  
BSB number 082-186  
Account number 93-373-7223

### Transaction Details

Date	Particulars	Debits	Credits	Balance
1 Sep 2021	Brought forward			1,174.09 Cr
6 Sep 2021	02970982/00001 Asteron Life 367806.....	715.54		458.55 Cr
24 Sep 2021	PC06C043-6098722 Superchoice P/L 395276.....		1,140.00	1,598.55 Cr
29 Sep 2021	QUICKSPR3054576645 Quicksuper 361578.....		782.61	2,381.16 Cr

### Summary of Government Charges

Government	From 1 July to date	Last year to 30 June
Withholding tax	\$0.00	\$0.00
Bank Account Debit (BAD) tax	\$0.00	\$0.00

Bank Accounts Debits (BAD) Tax or State Debits Duty has been abolished for all states & territories effective 1/7/2005. Any amount shown on this statement applies to debits processed on or before 30/06/2005.

For further information on any applicable rebates, fees or government charges, please refer to the NAB's "A Guide to Fees & Charges" booklet. Please retain this statement for taxation purposes

### Explanatory Notes

Please check all entries and report any apparent error or possible unauthorised transaction immediately.

We may subsequently adjust debits and credits, which may result in a change to your account balance to accurately reflect the obligations between us.

For information on resolving problems or disputes, contact us on 1800 152 015, or ask at any NAB branch.

273/34/01/00-03259/S065398/IL30795







## NAB Business Everyday Account

For further information call 13 22 65 for Personal Accounts or 13 10 12 for Business Accounts.

A 2-186  
SHSM PTY LTD ATF SHSM SUPER FUND  
16 TELOPEA AVE  
STRATHFIELD NSW 2135

### Account Balance Summary

Opening balance	\$2,381.16 Cr
Total credits	\$1,321.94
Total debits	\$623.00
<b>Closing balance</b>	<b>\$3,080.10 Cr</b>

**Statement starts 1 October 2021**  
**Statement ends 29 October 2021**

### Outlet Details

Carlingford  
Shop 116, Carlingford Court Shopping CEN  
Cnr Pennant Hills & Carlingford, Carlingford NSW 2118

### Account Details

SHSM PTY LTD ATF SHSM SUPER FUND  
BUSINESS EVERYDAY AC  
BSB number 082-186  
Account number 93-373-7223

### For Your Information

*HOW TO QUERY A TRANSACTION:  
IF YOU'VE BEEN CHARGED FOR SOMETHING YOU BELIEVE IS INCORRECT, UNAUTHORISED  
OR FOR SOMETHING YOU'VE NOT RECEIVED, YOU MAY BE ENTITLED TO A REFUND.  
TO QUERY A CHARGE, CALL 13 10 12 AS SOON AS POSSIBLE AS A DELAY IN  
NOTIFYING NAB MAY IMPACT NAB'S ABILITY TO RESOLVE THE ISSUE ON YOUR BEHALF.  
FOR MORE INFORMATION, SEE NAB.COM.AU/QUERYATRANSACTION*

### Transaction Details

Date	Particulars	Debits	Credits	Balance
1 Oct 2021	Brought forward			2,381.16 Cr
1 Oct 2021	Internet Bpay 4759814281255360.....	Tax Office Payments 623.00		1,758.16 Cr
8 Oct 2021	20576294/DISTRIB 411595.....	Australian Unity	409.94	2,168.10 Cr
29 Oct 2021	PC06C045-6109675 395276.....	Superchoice P/L	912.00	3,080.10 Cr

### Summary of Government Charges

Government	From 1 July to date	Last year to 30 June
Withholding tax	\$0.00	\$0.00
Bank Account Debit (BAD) tax	\$0.00	\$0.00

Bank Accounts Debits (BAD) Tax or State Debits Duty has been abolished for all states & territories effective 1/7/2005. Any amount shown on this statement applies to debits processed on or before 30/06/2005.

For further information on any applicable rebates, fees or government charges, please refer to the NAB's "A Guide to Fees & Charges" booklet. Please retain this statement for taxation purposes

### Explanatory Notes

*Please check all entries and report any apparent error or possible unauthorised transaction immediately.*

*We may subsequently adjust debits and credits, which may result in a change to your account balance to accurately reflect the obligations between us.*

*For information on resolving problems or disputes, contact us on 1800 152 015, or ask at any NAB branch.*





## NAB Business Everyday Account

For further information call 13 22 65 for Personal Accounts or 13 10 12 for Business Accounts.



A 2-186  
SHSM PTY LTD ATF SHSM SUPER FUND  
16 TELOPEA AVE  
STRATHFIELD NSW 2135

### Account Balance Summary

Opening balance	\$3,080.10	Cr
Total credits	\$1,183.90	
Total debits	\$0.00	
<b>Closing balance</b>	<b>\$4,264.00</b>	<b>Cr</b>

**Statement starts 30 October 2021**  
**Statement ends 30 November 2021**

### Outlet Details

Carlingford  
Shop 116, Carlingford Court Shopping CEN  
Cnr Pennant Hills & Carlingfor, Carlingford NSW 2118

### Account Details

SHSM PTY LTD ATF SHSM SUPER FUND  
BUSINESS EVERYDAY AC  
BSB number 082-186  
Account number 93-373-7223

### Transaction Details

Date	Particulars	Debits	Credits	Balance
30 Oct 2021	Brought forward			3,080.10 Cr
26 Nov 2021	PC06C047-6118490 Superchoice P/L 395276.....		1,183.90	4,264.00 Cr

### Summary of Government Charges

Government	From 1 July to date	Last year to 30 June
Withholding tax	\$0.00	\$0.00
Bank Account Debit (BAD) tax	\$0.00	\$0.00

Bank Accounts Debits (BAD) Tax or State Debits Duty has been abolished for all states & territories effective 1/7/2005. Any amount shown on this statement applies to debits processed on or before 30/06/2005.

For further information on any applicable rebates, fees or government charges, please refer to the NAB's "A Guide to Fees & Charges" booklet. Please retain this statement for taxation purposes

### Explanatory Notes

*Please check all entries and report any apparent error or possible unauthorised transaction immediately.*

*We may subsequently adjust debits and credits, which may result in a change to your account balance to accurately reflect the obligations between us.*

*For information on resolving problems or disputes, contact us on 1800 152 015, or ask at any NAB branch.*

334/34/01/A030006/S044022/088013





## NAB Business Everyday Account

For further information call 13 22 65 for Personal Accounts or 13 10 12 for Business Accounts.

A 2-186  
SHSM PTY LTD ATF SHSM SUPER FUND  
16 TELOPEA AVE  
STRATHFIELD NSW 2135

### Account Balance Summary

Opening balance	\$4,264.00	Cr
Total credits	\$1,181.30	
Total debits	\$679.00	
<b>Closing balance</b>	<b>\$4,766.30</b>	<b>Cr</b>

**Statement starts 1 December 2021**  
**Statement ends 31 December 2021**

### Outlet Details

Carlingford  
Shop 116, Carlingford Court Shopping CEN  
Cnr Pennant Hills & Carlingford, Carlingford NSW 2118

### Account Details

SHSM PTY LTD ATF SHSM SUPER FUND  
BUSINESS EVERYDAY AC  
BSB number 082-186  
Account number 93-373-7223

### Transaction Details

Date	Particulars	Debits	Credits	Balance
1 Dec 2021	Brought forward			4,264.00 Cr
15 Dec 2021	20576294 Australian Unity			
	623200.....		106.06	
	20576294 Australian Unity			
	623200.....		111.55	
	20576294 Australian Unity			
	623200.....		114.64	
	20576294 Australian Unity			
	623200.....		416.67	
	20576294 Australian Unity			
	623200.....		432.38	5,445.30 Cr
29 Dec 2021	Internet Bpay Asic			
	2296233979469.....	56.00		
	Internet Bpay Tax Office Payments			
	4759814281255360.....	623.00		4,766.30 Cr

### Summary of Government Charges

Government	From 1 July to date	Last year to 30 June
Withholding tax	\$0.00	\$0.00
Bank Account Debit (BAD) tax	\$0.00	\$0.00

Bank Accounts Debits (BAD) Tax or State Debits Duty has been abolished for all states & territories effective 1/7/2005. Any amount shown on this statement applies to debits processed on or before 30/06/2005.

For further information on any applicable rebates, fees or government charges, please refer to the NAB's "A Guide to Fees & Charges" booklet. Please retain this statement for taxation purposes

### Explanatory Notes

Please check all entries and report any apparent error or possible unauthorised transaction immediately.

We may subsequently adjust debits and credits, which may result in a change to your account balance to accurately reflect the obligations between us.

For information on resolving problems or disputes, contact us on 1800 152 015, or ask at any NAB branch.





## NAB Business Everyday Account

For further information call 13 22 65 for Personal Accounts or 13 10 12 for Business Accounts.

A 2-186  
SHSM PTY LTD ATF SHSM SUPER FUND  
16 TELOPEA AVE  
STRATHFIELD NSW 2135

### Account Balance Summary

Opening balance	\$4,766.30	Cr
Total credits	\$1,983.57	
Total debits	\$0.00	
<b>Closing balance</b>	<b>\$6,749.87</b>	<b>Cr</b>

**Statement starts 1 January 2022**  
**Statement ends 31 January 2022**

### Outlet Details

Carlingford  
Shop 116, Carlingford Court Shopping CEN  
Cnr Pennant Hills & Carlingfor, Carlingford NSW 2118

### Account Details

SHSM PTY LTD ATF SHSM SUPER FUND  
BUSINESS EVERYDAY AC  
BSB number 082-186  
Account number 93-373-7223

### Transaction Details

Date	Particulars	Debits	Credits	Balance
1 Jan 2022	Brought forward			4,766.30 Cr
11 Jan 2022	20576294/DISTRIB Australian Unity 623200.....		409.94	5,176.24 Cr
31 Jan 2022	QUICKSPR3134277154 Quicksuper 361578.....		782.61	
	PC06C046-6133646 Superchoice P/L 395276.....		791.02	6,749.87 Cr

### Summary of Government Charges

Government	From 1 July to date	Last year to 30 June
Withholding tax	\$0.00	\$0.00
Bank Account Debit (BAD) tax	\$0.00	\$0.00

Bank Accounts Debits (BAD) Tax or State Debits Duty has been abolished for all states & territories effective 1/7/2005. Any amount shown on this statement applies to debits processed on or before 30/06/2005.

For further information on any applicable rebates, fees or government charges, please refer to the NAB's "A Guide to Fees & Charges" booklet. Please retain this statement for taxation purposes

### Explanatory Notes

Please check all entries and report any apparent error or possible unauthorised transaction immediately.

We may subsequently adjust debits and credits, which may result in a change to your account balance to accurately reflect the obligations between us.

For information on resolving problems or disputes, contact us on 1800 152 015, or ask at any NAB branch.

031/34/01/0030701/5045987/091973







## NAB Business Everyday Account

For further information call 13 22 65 for Personal Accounts or 13 10 12 for Business Accounts.



A 2-186  
SHSM PTY LTD ATF SHSM SUPER FUND  
16 TELOPEA AVE  
STRATHFIELD NSW 2135

### Account Balance Summary

Opening balance	\$6,749.87	Cr
Total credits	\$2,175.00	
Total debits	\$0.00	
<b>Closing balance</b>	<b>\$8,924.87</b>	<b>Cr</b>

**Statement starts 1 February 2022**  
**Statement ends 28 February 2022**

### Outlet Details

Carlingford  
Shop 116, Carlingford Court Shopping CEN  
Cnr Pennant Hills & Carlingford, Carlingford NSW 2118

### Account Details

SHSM PTY LTD ATF SHSM SUPER FUND  
BUSINESS EVERYDAY AC  
BSB number 082-186  
Account number 93-373-7223

### For Your Information

*Be on the lookout for invoice scams. Criminals can change bank account details on a legitimate invoice to an account controlled by scammers. Criminals may also make a request by email or phone to update bank account details for suppliers or employees. Before actioning, always confirm any changes to payment details by contacting the supplier/employee using a phone number listed on their website or you have on file. Learn how to recognise scams and protect your business by visiting [nab.com.au/security](http://nab.com.au/security).*

### Transaction Details

Date	Particulars	Debits	Credits	Balance
1 Feb 2022	Brought forward			6,749.87 Cr
4 Feb 2022	PC06C045-6136400 Superchoice P/L 395276.....		912.00	7,661.87 Cr
25 Feb 2022	PC06C047-6140324 Superchoice P/L 395276.....		1,263.00	8,924.87 Cr

### Summary of Government Charges

	From 1 July to date	Last year to 30 June
<b>Government</b>		
Withholding tax	\$0.00	\$0.00
Bank Account Debit (BAD) tax	\$0.00	\$0.00

Bank Accounts Debits (BAD) Tax or State Debits Duty has been abolished for all states & territories effective 1/7/2005. Any amount shown on this statement applies to debits processed on or before 30/06/2005.

For further information on any applicable rebates, fees or government charges, please refer to the NAB's "A Guide to Fees & Charges" booklet. Please retain this statement for taxation purposes

### Explanatory Notes

*Please check all entries and report any apparent error or possible unauthorised transaction immediately.*

*We may subsequently adjust debits and credits, which may result in a change to your account balance to accurately reflect the obligations between us.*

*For information on resolving problems or disputes, contact us on 1800 152 015, or ask at any NAB branch.*

059/34/01/00/286/43/5042676/085351





## NAB Business Everyday Account

For further information call 13 22 65 for Personal Accounts or 13 10 12 for Business Accounts.



A 2-186  
SHSM PTY LTD ATF SHSM SUPER FUND  
16 TELOPEA AVE  
STRATHFIELD NSW 2135

### Account Balance Summary

Opening balance	\$8,924.87 Cr
Total credits	\$0.00
Total debits	\$0.00
<b>Closing balance</b>	<b>\$8,924.87 Cr</b>

**Statement starts 1 March 2022**  
**Statement ends 31 March 2022**

### Outlet Details

Carlingford  
Shop 116, Carlingford Court Shopping CEN  
Cnr Pennant Hills & Carlingfor, Carlingford NSW 2118

### Account Details

SHSM PTY LTD ATF SHSM SUPER FUND  
BUSINESS EVERYDAY AC  
BSB number 082-186  
Account number 93-373-7223

### Transaction Details

Date	Particulars	Debits	Credits	Balance
1 Mar 2022	Brought forward			8,924.87 Cr

### Summary of Government Charges

Government	From 1 July to date	Last year to 30 June
Withholding tax	\$0.00	\$0.00
Bank Account Debit (BAD) tax	\$0.00	\$0.00

Bank Accounts Debits (BAD) Tax or State Debits Duty has been abolished for all states & territories effective 1/7/2005. Any amount shown on this statement applies to debits processed on or before 30/06/2005.

For further information on any applicable rebates, fees or government charges, please refer to the NAB's "A Guide to Fees & Charges" booklet. Please retain this statement for taxation purposes

### Explanatory Notes

*Please check all entries and report any apparent error or possible unauthorised transaction immediately.*

*We may subsequently adjust debits and credits, which may result in a change to your account balance to accurately reflect the obligations between us.*

*For information on resolving problems or disputes, contact us on 1800 152 015, or ask at any NAB branch.*





## NAB Business Everyday Account

For further information call 13 22 65 for Personal Accounts or 13 10 12 for Business Accounts.

A 2-186  
SHSM PTY LTD ATF SHSM SUPER FUND  
23 CARCOOLA CRESCENT  
NORMANHURST NSW 2076

### Account Balance Summary

Opening balance	\$8,924.87 Cr
Total credits	\$35,712.31
Total debits	\$34,333.20
<b>Closing balance</b>	<b>\$10,303.98 Cr</b>

**Statement starts 1 April 2022**  
**Statement ends 29 April 2022**

### Outlet Details

Carlingford  
Shop 116, Carlingford Court Shopping CEN  
Cnr Pennant Hills & Carlingford, Carlingford NSW 2118

### Account Details

SHSM PTY LTD ATF SHSM SUPER FUND  
BUSINESS EVERYDAY AC  
BSB number 082-186  
Account number 93-373-7223

### Transaction Details

Date	Particulars	Debits	Credits	Balance
1 Apr 2022	Brought forward			8,924.87 Cr
8 Apr 2022	20576294/DISTRIB Australian Unity 623200.....		431.51	
	Transfer Smsf NAB Trade 434791.....		10,000.00	19,356.38 Cr
11 Apr 2022	Transfer Shsm Share Trade 434791.....		2,600.00	
	Internet Bpay Tax Office Payments 004759814281255360.....	330.00		21,626.38 Cr
19 Apr 2022	Starlink Ipo Rbc World Alliance L 064793Incorrect Acct.....		20,003.20	
	Internet Transfer Starlink Ipo.....	20,003.20		21,626.38 Cr
26 Apr 2022	PC120422-182232359 Superchoice P/L 481471.....		994.90	22,621.28 Cr
29 Apr 2022	QUICKSPR3195568626 Quicksuper 361578.....		1,682.70	
	Internet Transfer Share Trading.....	14,000.00		10,303.98 Cr

### Summary of Government Charges

Government	From 1 July to date	Last year to 30 June
Withholding tax	\$0.00	\$0.00
Bank Account Debit (BAD) tax	\$0.00	\$0.00

Bank Accounts Debits (BAD) Tax or State Debits Duty has been abolished for all states & territories effective 1/7/2005. Any amount shown on this statement applies to debits processed on or before 30/06/2005.

For further information on any applicable rebates, fees or government charges, please refer to the NAB's "A Guide to Fees & Charges" booklet. Please retain this statement for taxation purposes

### Explanatory Notes

Please check all entries and report any apparent error or possible unauthorised transaction immediately.  
We may subsequently adjust debits and credits, which may result in a change to your account balance to accurately reflect the obligations between us.  
For information on resolving problems or disputes, contact us on 1800 152 015, or ask at any NAB branch.

11/9/34/01/A030190/S04464/088927





## NAB Business Everyday Account

For further information call 13 22 65 for Personal Accounts or 13 10 12 for Business Accounts.



A 2-186  
SHSM PTY LTD ATF SHSM SUPER FUND  
23 CARCOOLA CRESCENT  
NORMANHURST NSW 2076

### Account Balance Summary

Opening balance	\$10,303.98	Cr
Total credits	\$3,166.96	
Total debits	\$0.00	
<b>Closing balance</b>	<b>\$13,470.94</b>	<b>Cr</b>

**Statement starts 30 April 2022**  
**Statement ends 31 May 2022**

### Outlet Details

Carlingford  
Shop 116, Carlingford Court Shopping CEN  
Cnr Pennant Hills & Carlingfor, Carlingford NSW 2118

### Account Details

SHSM PTY LTD ATF SHSM SUPER FUND  
BUSINESS EVERYDAY AC  
BSB number 082-186  
Account number 93-373-7223

### Transaction Details

Date	Particulars	Debits	Credits	Balance
30 Apr 2022	Brought forward			10,303.98 Cr
11 May 2022	PC090522-125927662 Superchoice P/L 481471.....		2,128.48	12,432.46 Cr
12 May 2022	PC100522-126083946 Superchoice P/L 481471.....		1,038.48	13,470.94 Cr
13 May 2022	Please Note From Today Your Dr Interest Rate Is 6.720%			13,470.94 Cr

### Summary of Government Charges

Government	From 1 July to date	Last year to 30 June
Withholding tax	\$0.00	\$0.00
Bank Account Debit (BAD) tax	\$0.00	\$0.00

Bank Accounts Debits (BAD) Tax or State Debits Duty has been abolished for all states & territories effective 1/7/2005. Any amount shown on this statement applies to debits processed on or before 30/06/2005.

For further information on any applicable rebates, fees or government charges, please refer to the NAB's "A Guide to Fees & Charges" booklet. Please retain this statement for taxation purposes

### Explanatory Notes

Please check all entries and report any apparent error or possible unauthorised transaction immediately.

We may subsequently adjust debits and credits, which may result in a change to your account balance to accurately reflect the obligations between us.

For information on resolving problems or disputes, contact us on 1800 152 015, or ask at any NAB branch.

151/34/01/0027956/S042371/081741







**NAB Business Everyday Account**

For further information call 13 22 65 for Personal Accounts or 13 10 12 for Business Accounts.



A 2-186  
SHSM PTY LTD ATF SHSM SUPER FUND  
23 CARCOOLA CRESCENT  
NORMANHURST NSW 2076

**Account Balance Summary**

Opening balance	\$13,470.94	Cr
Total credits	\$1,305.62	
Total debits	\$0.00	
<b>Closing balance</b>	<b>\$14,776.56</b>	<b>Cr</b>

**Statement starts 1 June 2022**  
**Statement ends 30 June 2022**

**Outlet Details**

Carlingford  
Shop 116, Carlingford Court Shopping CEN  
Cnr Pennant Hills & Carlingfor, Carlingford NSW 2118

**Account Details**

SHSM PTY LTD ATF SHSM SUPER FUND  
BUSINESS EVERYDAY AC  
BSB number 082-186  
Account number 93-373-7223

**Transaction Details**

Date	Particulars	Debits	Credits	Balance
1 Jun 2022	Brought forward			13,470.94 Cr
17 Jun 2022	Please Note From Today Your Dr Interest Rate Is 7.220%			13,470.94 Cr
21 Jun 2022	PC200622-116740909 Superchoice P/L 481471.....		1,305.62	14,776.56 Cr

**Summary of Government Charges**

	From 1 July to date	Last year to 30 June
<b>Government</b>		
Withholding tax	\$0.00	\$0.00
Bank Account Debit (BAD) tax	\$0.00	\$0.00

Bank Accounts Debits (BAD) Tax or State Debits Duty has been abolished for all states & territories effective 1/7/2005. Any amount shown on this statement applies to debits processed on or before 30/06/2005.

For further information on any applicable rebates, fees or government charges, please refer to the NAB's "A Guide to Fees & Charges" booklet. Please retain this statement for taxation purposes

**Explanatory Notes**

*Please check all entries and report any apparent error or possible unauthorised transaction immediately.  
We may subsequently adjust debits and credits, which may result in a change to your account balance to accurately reflect the obligations between us.*

*For information on resolving problems or disputes, contact us on 1800 152 015, or ask at any NAB branch.*

181/34/01/N07/4352/S122804/ID:45607



# Statement

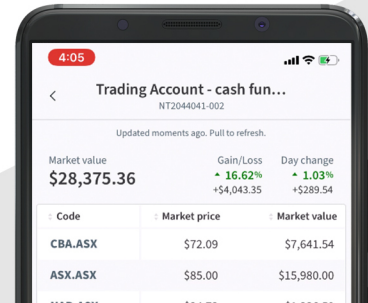
SHSM SUPER FUND  
 16 TELOPEA AVE  
 STRATHFIELD NSW 2135

Statement period:  
 01/07/2021 to 31/12/2021  
 Statement number:  
 8

## INTRODUCING THE NEW NABTRADE MOBILE APP

It's easier to use, has more functionality and lets you trade and transfer cash on the go.  
 Just another way we're investing in you.

Find out more at [www.nabtrade.com.au/mobile](http://www.nabtrade.com.au/mobile)



### Your accounts

#### Your nabtrade cash products summary

SHSM Super Fund 083-052 303329989 (as at 31/12/2021) \$3,078.54 CR

### SHSM Super Fund

083-052 303329989

#### Account details

**B**  
PAY  
 Biller Code : 102426  
 Ref : 3052303329989

**Telephone & Internet Banking — BPAY®**  
 Contact your bank or financial institution to make this payment from your cheque, savings, debit or transaction account. More info: [www.bpay.com.au](http://www.bpay.com.au)

BSB	083-052
Account number	303329989
Interest rate as at 31/12/2021	0.05% P.A.

#### Account balance summary

Opening balance	\$86.26 CR
Total credits	\$20,973.11
Total debits	\$17,980.83
Closing balance	\$3,078.54 CR

#### Transaction details

Date	Details	Debits	Credits	Balance
01/07/2021	Balance brought forward			\$86.26 CR
02/07/2021	DIVIDEND on GILD.US (WHT of USD -6.18) - USD to AUD @ 1.3223		\$46.28	\$132.54 CR
26/07/2021	SELL GILD.NAS 58 USD 68.67 93798902 NT2002292-004 0.7418		\$5,349.15	\$5,481.69 CR
27/07/2021	BUY NVDA.NAS 20 USD 195.8 93876252 NT2002292-004 0.7309	\$5,377.73		\$103.96 CR
28/07/2021	FUNDS TRANSFER - SHARE TRADING SHARE TRADING		\$4,000.00	\$4,103.96 CR

## SHSM Super Fund (continued)

Transaction details (continued)				
Date	Details	Debits	Credits	Balance
30/07/2021	INTEREST		\$0.03	\$4,103.99 CR
30/07/2021	SELL REX.ASX 613 AUD 1.23 94068419 NT2002292-002		\$739.04	\$4,843.03 CR
02/08/2021	BUY MRK.NYS 38 USD 77.5 94194871 NT2002292-004 0.7318	\$4,038.78		\$804.25 CR
18/08/2021	SELL GLD.NYS 23 USD 166.7 95308553 NT2002292-004 0.7388		\$5,169.61	\$5,973.86 CR
18/08/2021	BUY MRK.NYS 7 USD 76.75 95310521 NT2002292-004 0.7274	\$753.54		\$5,220.32 CR
18/08/2021	SELL SLV.NYS 98 USD 22.02 95310807 NT2002292-004 0.7391		\$2,904.72	\$8,125.04 CR
20/08/2021	BUY MRK.NYS 71 USD 78.83 95500261 NT2002292-004 0.7184	\$7,810.78		\$314.26 CR
20/08/2021	SELL NVDA.NAS 10 USD 195.15 95500505 NT2002292-004 0.7307		\$2,655.74	\$2,970.00 CR
31/08/2021	INTEREST		\$0.05	\$2,970.05 CR
08/09/2021	DIVIDEND on HL.US (WHT of USD -1.16) - USD to AUD @ 1.3384		\$8.78	\$2,978.83 CR
08/09/2021	DIVIDEND on HL.US (WHT of USD -0.58) - USD to AUD @ 1.3384		\$4.39	\$2,983.22 CR
28/09/2021	DIVIDEND on NVDA.US (WHT of USD -0.06) - USD to AUD @ 1.3529		\$0.46	\$2,983.68 CR
12/10/2021	DIVIDEND on MRK.US (WHT of USD -11.31) - USD to AUD @ 1.3598		\$87.15	\$3,070.83 CR
08/12/2021	DIVIDEND on HL.US (WHT of USD -0.39) - USD to AUD @ 1.4147		\$3.07	\$3,073.90 CR
08/12/2021	DIVIDEND on HL.US (WHT of USD -0.58) - USD to AUD @ 1.4146		\$4.64	\$3,078.54 CR
31/12/2021	Closing Balance			\$3,078.54 CR

Please check all entries and report apparent errors or possible unauthorised transactions immediately. NAB may subsequently adjust debits or credits, which may result in a change to your account balance to accurately reflect the obligations between us. For information on resolving problems or disputes call 13 13 80. Please retain this statement for tax purposes.

# Statement


SHSM SUPER FUND  
 16 TELOPEA AVE  
 STRATHFIELD NSW 2135

Statement period:  
 01/01/2022 to 30/06/2022  
 Statement number:  
 9

## YOU ASKED. WE LISTENED.

In response to feedback from clients like yourself, we've made enhancements to our mobile app and website to improve your investing experience.

To find out more, visit [nabtrade.com.au/enhancements](https://nabtrade.com.au/enhancements)



## Your accounts

Your nabtrade cash products summary	
SHSM Super Fund 083-052 303329989 (as at 30/06/2022)	\$14,168.41 CR

## SHSM Super Fund 083-052 303329989

Account details		
 <b>Biller Code : 102426</b> <b>Ref : 3052303329989</b>	<b>Telephone &amp; Internet Banking — BPAY®</b> Contact your bank or financial institution to make this payment from your cheque, savings, debit or transaction account. More info: <a href="https://www.bpay.com.au">www.bpay.com.au</a>	<b>BSB</b> <span style="float: right;"><b>083-052</b></span>
		<b>Account number</b> <span style="float: right;"><b>303329989</b></span>
		<b>Interest rate as at 30/06/2022</b> <span style="float: right;"><b>0.10% P.A.</b></span>

Account balance summary	
Opening balance	<b>\$3,078.54 CR</b>
Total credits	\$31,350.77
Total debits	\$20,260.90
Closing balance	<b>\$14,168.41 CR</b>

Transaction details				
Date	Details	Debits	Credits	Balance
01/01/2022	Balance brought forward			\$3,078.54 CR
12/01/2022	DIVIDEND on MRK.US (WHT of USD -12.01) - USD to AUD @ 1.3831		\$94.09	\$3,172.63 CR
13/01/2022	SELL MRK.NYS 116 USD 81.53431 104217554 NT2002292-004 0.7254		\$13,018.17	\$16,190.80 CR

## SHSM Super Fund (continued)

Transaction details (continued)				
Date	Details	Debits	Credits	Balance
18/01/2022	DIVIDEND on NVDA.US (WHT of USD -0.06) - USD to AUD @ 1.3529		\$0.46	\$16,191.26 CR
24/01/2022	SELL INO.NAS 748 USD 4.12 104836594 NT2002292-004 0.7278		\$4,219.33	\$20,410.59 CR
24/01/2022	BUY HEPA.NAS 1652 USD 1.06 104836680 NT2002292-004 0.7161	\$2,460.31		\$17,950.28 CR
25/01/2022	BUY TTT.NYS 110 USD 33.66 104946166 NT2002292-004 0.7147	\$5,200.59		\$12,749.69 CR
31/01/2022	INTEREST		\$0.32	\$12,750.01 CR
28/02/2022	INTEREST		\$0.56	\$12,750.57 CR
24/03/2022	DIVIDEND on HL.US (WHT of USD -0.39) - USD to AUD @ 1.3440		\$2.93	\$12,753.50 CR
25/03/2022	DIVIDEND on HL.US (WHT of USD -0.58) - USD to AUD @ 1.3293		\$4.36	\$12,757.86 CR
30/03/2022	DIVIDEND on NVDA.US (WHT of USD -0.06) - USD to AUD @ 1.3235		\$0.45	\$12,758.31 CR
31/03/2022	INTEREST		\$0.66	\$12,758.97 CR
08/04/2022	nabtrade: 12843846 FUNDS TRANSFER 082186, 933737223 Transfer SMSF NAB Trade	\$10,000.00		\$2,758.97 CR
11/04/2022	nabtrade: 12854610 FUNDS TRANSFER 082186, 933737223 Transfer SHSM Share Trade	\$2,600.00		\$158.97 CR
29/04/2022	INTEREST		\$0.16	\$159.13 CR
29/04/2022	FUNDS TRANSFER - SHARE TRADING SHARE TRADING		\$14,000.00	\$14,159.13 CR
31/05/2022	INTEREST		\$0.64	\$14,159.77 CR
17/06/2022	DIVIDEND on HL.US (WHT of USD -0.58) - USD to AUD @ 1.4360		\$4.71	\$14,164.48 CR
17/06/2022	DIVIDEND on HL.US (WHT of USD -0.39) - USD to AUD @ 1.4358		\$3.13	\$14,167.61 CR
20/06/2022	Please note from 20/06/2022 the interest rate on your account is 0.10%p.a.			\$14,167.61 CR
30/06/2022	INTEREST		\$0.80	\$14,168.41 CR
30/06/2022	Closing Balance			\$14,168.41 CR

### The following information is provided to assist in preparing your 2021/22 tax return

Account Number	083-052-303329989
Credit interest paid 2021/22 financial year	\$3.22
Withholding Tax	\$0.00

Please check all entries and report apparent errors or possible unauthorised transactions immediately. NAB may subsequently adjust debits or credits, which may result in a change to your account balance to accurately reflect the obligations between us. For information on resolving problems or disputes call 13 13 80. Please retain this statement for tax purposes.

# Portfolio holdings report

**Holding date:**  
 30/06/2022

## SHSM Super Fund

Trading Account - Domestic - Cash funded NT2002292-002							
Description	Code	Quantity	Portfolio(%)	Market Price	Avg. Price	Market Value	Gain/Loss (\$/%)
ALLKEM LIMITED ORDINARY FULLY PAID	AKE.ASX	1830.0	31.90%	\$10.31	\$2.721	\$18,867.30	\$13,887.80 (278.90%)
CRESO PHARMA LIMITED ORDINARY FULLY PAID	CPH.ASX	1000.0	0.06%	\$0.035	\$0.544	\$35.00	-\$509.01 (-93.57%)
CRESO PHARMA LIMITED OPTION EXPIRING 02-NOV-2024	CPHO.ASX	334.0	0.00%	\$0.005	\$0.00	\$1.67	\$1.67 (0.00%)
NEW TALISMAN GOLD MINES LIMITED ORDINARY FULLY PAID	NTL.ASX	65670.0	0.17%	\$0.0015	\$0.0152	\$98.505	-\$901.50 (-90.15%)
PILBARA MINERALS LIMITED ORDINARY FULLY PAID	PLS.ASX	5620.0	21.76%	\$2.29	\$0.8769	\$12,869.80	\$7,941.56 (161.14%)
<b>Totals</b>						<b>\$31,872.275</b>	<b>\$20,420.52 (178.32%)</b>

Trading Account - International (AUD funded) NT2002292-004							
Description	Code	Quantity	Portfolio(%)	Market Price	Avg. Price	Market Value	Gain/Loss (\$/%)
HECLA MINING ORD Common Stock	HL.NYS	1028.0	10.13%	\$4.01	\$3.0794	USD \$4,122.28	\$956.67 (30.22%)
HEPION PHARMACEUTICALS ORD Common Stock	HEPA.NAS	2000.0	2.87%	\$0.585	\$1.2184	USD \$1,170.00	-\$1,266.70 (-51.98%)
NVIDIA ORD Common Stock	NVDA.NAS	10.0	3.57%	\$145.23	\$196.529	USD \$1,452.30	-\$512.99 (-26.10%)
SPDR? Gold Shares Exchange Traded Fund	GLD.ARC	24.0	9.92%	\$168.32	\$161.4425	USD \$4,039.68	\$165.06 (4.26%)
iShares Silver Trust Exchange Traded Fund	SLV.ARC	100.0	4.50%	\$18.31	\$16.1391	USD \$1,831.00	\$217.09 (13.45%)
ProShares UltraPro Short 20+ Year Trs Exchange Traded Fund	TTT.ARC	110.0	15.13%	\$55.98	\$33.7896	USD \$6,157.80	\$2,440.94 (65.67%)
<b>Totals</b>						<b>USD \$18,773.06</b>	<b>\$2,000.07 (11.92%)</b>



SHSM SUPER FUND  
23 Caroola Crescent  
NORMANHURST NSW 2076

**Enquiries:** 1300 997 774  
**Mail:** GPO Box 804  
Melbourne VIC 3001  
**Web:** [australianunity.com.au](http://australianunity.com.au)  
**Email:** [australianunitywealth@unitregistry.com.au](mailto:australianunitywealth@unitregistry.com.au)  
**Issued by:** Australian Unity Funds Management  
Limited  
ABN 60 071 497 115  
AFSL 234454

---

**Account Name**  
SHSM PTY LTD ATF SHSM SUPER FUND

**Account Number**  
20576294

**Account Holder Name**      **TFN/ABN**  
SHSM SUPER FUND              Supplied

**Financial Adviser**  
No Adviser

## Periodic Statement

01 Jul 2021 to 30 Jun 2022  
Australian Unity Healthcare Property Trust -  
Wholesale Units

---

Dear Investor(s)

Set out below are the details of your Australian Unity Healthcare Property Trust - Wholesale Units investment and a transaction history for the period.

Please keep this statement for future reference.

### Investment Summary - 30 Jun 2022

Date	Investment Fund	Price	Units Held	Market Value	%
30/06/2022	Australian Unity Healthcare Property Trust - Wholesale Units	\$2.6940	17,260.5326	\$46,499.87	100.00
30/06/2022	<b>Total Investments</b>			<b>\$46,499.87</b>	



**Periodic Statement**  
**Australian Unity Healthcare Property Trust -**  
**Wholesale Units**  
**01 July 2021 to 30 June 2022**

**Page 2 of 4**  
**Account Number 20576294**

**Australian Unity Healthcare Property Trust - Wholesale Units - Transaction List**

Date	Transactions	Unit Price (\$)	Transaction Units	Amount (AUD)	Unit Balance
01/07/2021	Opening Balance	2.2650		39,095.11	17,260.5326
01/07/2021	Distribution		0.0000	442.56	17,260.5326
01/10/2021	Distribution		0.0000	409.94	17,260.5326
01/01/2022	Distribution		0.0000	409.94	17,260.5326
01/04/2022	Distribution		0.0000	431.51	17,260.5326
30/06/2022	Closing Balance	2.6940		46,499.87	17,260.5326

Return on Investment	Termination Value
\$9,098.71	\$46,499.87

Total Income received in FY22 = 1,251.39	
Income from ATS = 1,685.49	
-----	
FY22 Receivable = 434.10	

**Fees and costs summary**

**Fees deducted directly from your account**

\$0.00

The amount has been deducted directly from your account (reflected in the transactions listed on this statement)

**Fees and costs deducted from your investment**

\$879.73

This approximate amount has been deducted from your investment and covers amounts that have reduced your return on your investment and that are not reflected as transactions listed on this statement or in the Additional explanation of fees and costs.

**TOTAL FEES AND COSTS YOU PAID**

\$879.73

This approximate amount includes all the fees and costs that affected your investment during the period.

If you have any questions or would like more information about your investment, contact your financial adviser or visit our Investor Portal, <https://australianunitywealth.unitregistry.com.au/funds/public/login/au/investor>. Alternatively, you can call our Client Services team on 1300 997 774 or +61 3 9616 8687 from 8.30am to 5.30pm AEDT or email [australianunitywealth@unitregistry.com.au](mailto:australianunitywealth@unitregistry.com.au)

Your Wealth Team - Australian Unity

---

**Notes to the statement**

**Return on investment**

This includes the increase or decrease in the value of your investment (net of entry/exit fees), plus any distributions, during the reporting period. The return on an investment may differ from the performance of a fund because the former takes into consideration any additional transactions and timing differences (e.g. investments, withdrawals etc.) and the effect that they have on an investment return.

**Termination value**

The termination value of your investment is equal to your closing balance above, or if you have fully withdrawn during the period, the withdrawal amount paid, taking into account any applicable exit fees.

**Buy/sell spread**

Where you have bought or sold units in a fund, a buy/sell spread may have been applied. The buy/sell spread reflects our estimate of the transaction costs expected to be incurred in buying or selling the Fund's underlying assets. Please note that the buy/sell spread is not a fee paid to us, it is paid to the Fund.

**Additional explanation of fees and costs**

You should refer to the fund's disclosure document for detailed descriptions of the fund's 'Fees and costs deducted from your investment' section above.

**Fees deducted directly from your account** **\$0.00**

Represents fees directly deducted from your investment account this period as shown under the Fund Transactions section of your statement.

**Fees and costs deducted from your investment** **\$879.73**

This approximate amount has been deducted from your investment and covers amounts that have reduced your return on your investment. Below is a break down of the fees and costs deducted from your investment.

**Management Fees and Costs** **\$422.27**

This approximate amount in Management Fees and Costs has been deducted from your investment. It includes, for example, management fees, fund expenses and indirect costs.

**Transaction Costs including buy/sell spread** **\$457.46**

This approximate amount in Transactions Costs has been deducted from your investment which consists of \$0.00 captured via the buy/sell spread on any Application or Redemption within the period, and \$457.46 in other Transaction costs.

**Complaint Process**

We aim to resolve any concerns or complaints quickly and fairly. If you have a concern or a complaint please contact us Monday to Friday on 1300 997 774 or +61 3 9616 8687 from 8.30am to 5.30pm AEST or write to us at Australian Unity Wealth, GPO Box 804, Melbourne, VIC, 3001.

If your issue is not resolved to your satisfaction, you may refer your complaint to the Australian Financial Complaints Authority (AFCA).

Australian Financial Complaints Authority  
GPO Box 3, Melbourne VIC 3001  
Email: [info@afca.org.au](mailto:info@afca.org.au)  
Phone: 1800 931 678 (free call)  
Website: [afca.org.au](http://afca.org.au)

# Do we have your correct contact details?

Keeping your email and phone details up-to-date helps keep you safe and makes sure we're talking to the right person.



**Australian  
Unity**   
Real Wellbeing

## Update your details online:

It's quick and easy to set up an online account. You'll just need your account number, which can be found on your statement.

1. Create or login to your existing account via [australianunity.com.au/wealth/login](https://australianunity.com.au/wealth/login)
2. Click on **Managed and Property funds**
3. Enter your username and password

## Download a paper form and send via email:

1. Visit [australianunity.com.au/wealth/forms](https://australianunity.com.au/wealth/forms)
  2. Click on **Managed and Property funds**
  3. Download and print the **Change of Details Form**
  4. Email your completed form to [australianunitywealth\\_transactions@unitregistry.com.au](mailto:australianunitywealth_transactions@unitregistry.com.au) Alternatively you can post to Australian Unity, GPO Box 804, Melbourne VIC, 3001
- If you have any questions, call us on 1300 997 774 (8:30am to 5:30pm AEST Monday - Friday) or email [australianunitywealth@unitregistry.com.au](mailto:australianunitywealth@unitregistry.com.au)

# SHSM Super Fund General Ledger

As at 30 June 2022

Transaction Date	Description	Units	Debit	Credit	Balance \$
<b>Distributions Receivable (61800)</b>					
<u>Aust Unity Hcare Prop Trst Wsale Un (AUS0112AU)</u>					
01/07/2021	Opening Balance				1,623.86 DR
15/07/2021	20576294/DISTRIB Australian Unity 411595			442.56	1,181.30 DR
15/12/2021	20576294 Australian Unity 623200			106.06	1,075.24 DR
15/12/2021	20576294 Australian Unity 623200			111.55	963.69 DR
15/12/2021	20576294 Australian Unity 623200			114.64	849.05 DR
15/12/2021	20576294 Australian Unity 623200			416.67	432.38 DR
15/12/2021	20576294 Australian Unity 623200			432.38	0.00 DR
30/06/2022	Distribution		434.10		434.10 DR
			<b>434.10</b>	<b>1,623.86</b>	<b>434.10 DR</b>

**Total Debits: 434.10**

**Total Credits: 1,623.86**

# SHSM Super Fund General Ledger

As at 30 June 2022

Transaction Date	Description	Units	Debit	Credit	Balance \$
<b>PAYG Payable (86000)</b>					
PAYG Payable (86000)					
01/07/2021	Opening Balance				330.00 CR
31/03/2022	PAYG			623.00	953.00 CR
11/04/2022	Internet Bpay Tax Office Payments 004759814281255360		330.00		623.00 CR
30/06/2022	PAYG			623.00	1,246.00 CR
			<b>330.00</b>	<b>1,246.00</b>	<b>1,246.00 CR</b>

**Total Debits: 330.00**

**Total Credits: 1,246.00**

# SHSM Super Fund General Ledger

As at 30 June 2022

Transaction Date	Description	Units	Debit	Credit	Balance \$
<b>Sundry Creditors (88000)</b>					
<u>Sundry Creditors (88000)</u>					
01/07/2021	Opening Balance				1,070.00 CR
30/06/2022	Sundry Creditors Set off		1,070.00		0.00 DR
30/06/2022	Accountancy and Audit Fee Accrual			1,175.00	1,175.00 CR
			<b>1,070.00</b>	<b>1,175.00</b>	<b>1,175.00 CR</b>

**Total Debits: 1,070.00**

**Total Credits: 1,175.00**

SHSM Super Fund  
General Ledger

As at 30 June 2022

Transaction Date	Description	Units	Debit	Credit	Balance \$
<b>Deferred Tax Liability/Asset (89000)</b>					
<u>Deferred Tax Liability/Asset (89000)</u>					
01/07/2021	Opening Balance				1,978.94 CR
30/06/2022	Create Entries - PDIT Entry - 30/06/2022			1,234.33	3,213.27 CR
				<b>1,234.33</b>	<b>3,213.27 CR</b>

**Total Debits: 0.00**  
**Total Credits: 1,234.33**

SHSM Super Fund

Distribution Reconciliation Report

For The Period 01 July 2021 - 30 June 2022

Date	Payment Received	Non Primary Production Income (A) * <sub>1</sub>			Distributed Capital Gains (B) * <sub>2</sub>					Foreign Income * <sub>3</sub>		Non-Assessable			Taxable Income		
		Franked	Unfranked	Interest/ Other	Franking Credits	Discounted (After Discount)	Rate * <sub>5</sub>	CGT Concession	Indexed	Other	Foreign Income	Foreign Credits	Tax Exempt	Tax Free		Tax Deferred / AMIT * <sub>6</sub>	
<b>Managed Investments (Australian)</b>																	
AUS0112AU Aust Unity Hcare Prop Trst Wsale Un																	
08/10/2021	409.94						S									0.00	
11/01/2022	409.94						S									0.00	
08/04/2022	431.51						S									0.00	
30/06/2022	434.10						S									0.00	
30/06/2022	0.00						S									0.00	
30/06/2022	0.00	0.00	0.00	410.26	0.00	7.99	I	7.99	0.00	0.00	0.00	0.00	0.00	0.00	0.00	1,259.25	418.25
	1,685.49	0.00	0.00	410.26	0.00	7.99		7.99	0.00	0.00	0.00	0.00	0.00	0.00	0.00	1,259.25	418.25
<i>Net Cash Distribution:</i>		1,685.49															
	1,685.49	0.00	0.00	410.26	0.00	7.99		7.99	0.00	0.00	0.00	0.00	0.00	0.00	0.00	1,259.25	418.25



## SHSM Super Fund

# Distribution Reconciliation Report

For The Period 01 July 2021 - 30 June 2022

Date	Non Primary Production Income (A) * <sub>1</sub>				Distributed Capital Gains (B) * <sub>2</sub>				Foreign Income * <sub>3</sub>			Non-Assessable				Taxable Income
	Payment Received	Franked	Unfranked	Interest/ Other	Franking Credits	Discounted (After Discount)	Rate * <sub>5</sub>	CGT Concession	Indexed	Other	Foreign Income	Foreign Credits	Tax Exempt	Tax Free	Tax Deferred / AMIT * <sub>6</sub>	
<b>TOTAL</b>	1,685.49	0.00	0.00	410.26	0.00	7.99		7.99	0.00	0.00	0.00	0.00	0.00	0.00	1,259.25	418.25

### Total Distributed Gains

Discount Rate	Discounted	Gross
Superfund 1/3	0.00	0.00
Individual 50%(I)	7.99	15.98
<b>Total</b>	<b>7.99</b>	<b>15.98</b>

### \*<sub>1</sub> Summary of Non Primary Production Income (A)

Tax Label	Franked	Unfranked	Interest/Other	Less Other Deduction	Income Before Credits * <sub>7</sub>	Franking Credits	Total Including Credits
11M Gross trust distributions	0.00	0.00	410.26	0.00	410.26	0.00	410.26

\*<sub>2</sub> Forms part of the Net Capital Gains calculation for Tax Label 11A.

\*<sub>3</sub> Forms part of the Foreign Credits calculation for Tax Label 11D, D1, 13C1.

\*<sub>4</sub> Taxable Income is designed to match Tax Statement provided by Fund Manager.

Taxable Income in the SMSF Annual Return will be different due to application of Capital Losses in Net Capital Gain calculation and application of different discount method.

\*<sub>5</sub> This is the discount rate selected for the transaction. "S" being Super Funds at 1/3 and "I" being Individual at 50%.

\*<sub>6</sub> AMIT cost base net increase is reflected as negative amount i.e. negative tax deferred and AMIT cost base net decrease is reflected as positive amount i.e. positive tax deferred.

\*<sub>7</sub> Sum of Income Before Credits reconciles with Taxable Trust Distributions in Statement of Taxable Income.

^ Variance between Payment Received and Net Cash Distribution.

SHSM SUPER FUND  
23 Carcoola Crescent  
NORMANHURST NSW 2076

**Page**  
1 of 3

**Date**  
11 August 2022

**Part A: Your Details**

**Account Name**  
SHSM PTY LTD ATF SHSM SUPER FUND

**Account Number**  
20576294

**Account Holder Name** **TFN/ABN**  
SHSM SUPER FUND Provided

**Account TFN Type**  
SuperannuationFund

**Tax Residence**  
Australia

**Overseas Tax ID No**  
Not Provided

**Financial Adviser**  
No Adviser

**AMIT Member Annual Statement**  
**Australian Unity Healthcare Property Trust -**  
**Wholesale Units**  
**01 July 2021 to 30 June 2022**

Dear Investor(s)

Please find below the Attribution Managed Investment Trust Member Annual (AMMA) Statement for the year ended 30 June 2022 for your investment in the Australian Unity Healthcare Property Trust - Wholesale Units.

The following tax return items are valid for Australian resident individual unitholders only. Please retain this statement for tax purposes.

If any of the details in Part A are incorrect or if you have any questions about your account, you can call our Client Services team on 1300 997 774 or + 61 3 9616 8687 from 8.30am to 5.30pm, or email [australianunitywealth@unitregistry.com.au](mailto:australianunitywealth@unitregistry.com.au)

Part B Tax Return (Supplementary Section)	Summary of tax return (supplementary section) items	
	Amount (\$)	Tax return label
Non-primary production income	410.26	13U
Franked distributions from trusts	0.00	13C
Franking credits	0.00	13Q
Credit for tax file number (TFN) amounts withheld	0.00	13R
Share of credit for foreign resident amounts withheld	0.00	13A
Net capital gains	7.99	18A
Total current year capital gains	15.98	18H
Foreign entities - CFC income	0.00	19K
Assessable foreign source income	0.00	20E
Other net foreign source income	0.00	20M
Australian franking credits from a NZ company	0.00	20F
Foreign income tax offsets*	0.00	20O

\*To work out your foreign income tax offset (FITO) entitlement, see "20 Foreign source income and foreign assets or property" or the Guide to foreign income tax offset rules 2017 on [www.ato.gov.au](http://www.ato.gov.au).

<b>Part C</b> <b>Components of an attribution</b>	<b>Cash distribution (\$)</b>	<b>Tax paid or tax offsets</b> <b>Gross Up (\$)</b>	<b>Attribution/Amount (\$)</b>
<b>Australian Income</b>			
Dividends: unfranked amount	0.00	0.00	0.00
Dividends: unfranked CFI amount	0.00	0.00	0.00
Interest (subject to non-resident WHT)	0.00	0.00	0.00
Interest (not subject to non-resident WHT)	3.66	0.00	3.66
Other assessable Australian income	406.60	0.00	406.60
Other assessable Australian income (CBMI)	0.00	0.00	0.00
Other assessable Australian income (NCMI)	0.00	0.00	0.00
Other assessable Australian income (ExNCMI)	0.00	0.00	0.00
<b>Non-primary production income</b>	<b>410.26</b>	<b>0.00</b>	<b>410.26</b>
<b>Dividend: Franked amount (Franked distributions)</b>	<b>0.00</b>	<b>0.00</b>	<b>0.00</b>
<b>Capital Gains</b>			
Discounted capital gain NTARP	0.00	0.00	0.00
Capital gains - Discounted NTAP (NCMI)	0.00	0.00	0.00
Capital gains - Discounted NTAP (ExNCMI)	0.00	0.00	0.00
Discounted capital gain TARP	7.99	0.00	7.99
Capital gain: indexation method NTARP	0.00	0.00	0.00
Capital gain: indexation method TARP	0.00	0.00	0.00
Capital gain: other method NTARP	0.00	0.00	0.00
Capital gains - Other method NTAP (NCMI)	0.00	0.00	0.00
Capital gains - Other method NTAP (ExNCMI)	0.00	0.00	0.00
Capital gain: other method TARP	0.00	0.00	0.00
Capital gains - Discounted TAP (CBMI)	0.00	0.00	0.00
Capital gains - Discounted TAP (NCMI)	0.00	0.00	0.00
Capital gains - Discounted TAP (ExNCMI)	0.00	0.00	0.00
Capital gains - Other method TAP (CBMI)	0.00	0.00	0.00
Capital gains - Other method TAP (NCMI)	0.00	0.00	0.00
Capital gains - Other method TAP (ExNCMI)	0.00	0.00	0.00
<b>Net capital gains</b>	<b>7.99</b>	<b>0.00</b>	<b>7.99</b>
AMIT CGT gross up amount			7.99
Other capital gains distribution	7.99		
<b>Total current year capital gains</b>	<b>15.98</b>		<b>15.98</b>
<b>Foreign Income</b>			
Foreign Interest	0.00	0.00	0.00
Other Net Foreign Source Income	0.00	0.00	0.00
<b>Assessable net foreign income</b>	<b>0.00</b>	<b>0.00</b>	<b>0.00</b>
Attributed CFC income	0.00	0.00	0.00
<b>Total foreign income</b>	<b>0.00</b>	<b>0.00</b>	<b>0.00</b>
<b>Tax Offset</b>		<b>Amount (\$)</b>	
Franking credit tax offset		0.00	
Foreign income tax offset		0.00	
Australian franking credits from a NZ company		0.00	
Total tax offset		<b>0.00</b>	
<b>Other Non-Assessable Amounts</b>	<b>Cash distribution (\$)</b>	<b>Attribution amount (\$)</b>	
Tax-exempt amounts	0.00	0.00	
Tax-free amounts	0.00	0.00	
<b>Gross cash distribution</b>	<b>1,685.49</b>		
<b>AMIT Cost Base Adjustment</b>		<b>Amount (\$)</b>	
AMIT cost base - excess		1,259.25	
AMIT cost base - shortfall		0.00	
<b>Other Deductions From Distributions</b>			
Less Resident withholding tax	0.00		
Less non-resident withholding tax	0.00		
Less non-resident withholding tax (s12H)	0.00		
Other Rebate Income	0.00		
<b>Net cash distributions</b>	<b>1,685.49</b>		

[Link to Receivable](#)

<b>Non-resident Reporting</b>	<b>Attribution/Amount (\$)</b>	<b>Tax paid (\$)</b>
Interest exempt from withholding	0.00	0.00
Non-resident withholding amount	0.00	0.00
Non-resident member ss276-105(2)(a) or (b)	0.00	0.00
Non-resident member ss276-105(2)(c)	0.00	0.00
Managed Investment Trust Fund Payment	0.00	0.00
Managed Investment Trust Fund Payment (CBMI)	0.00	0.00
Managed Investment Trust Fund Payment (NCMI)	0.00	0.00
Managed Investment Trust Fund Payment (ExNCMI)	0.00	0.00
Managed Investment Trust Fund Payment (Total)	0.00	0.00
Deemed payment - Dividend	0.00	0.00
Deemed payment - Interest	0.00	0.00
Deemed payment - Fund Payment	0.00	0.00
Deemed payment - Fund Payment (CBMI)	0.00	0.00
Deemed payment - Fund Payment (NCMI)	0.00	0.00
Deemed payment - Fund Payment (ExNCMI)	0.00	0.00
Deemed payment - Fund Payment (Total)	0.00	0.00
Deemed payment - Royalties	0.00	0.00

**Notes:**

**Non resident withholding tax (12-H)/Income Tax (s276-105)** - If Managed Investment Trust withholding tax is applicable to your investment, this is the sum of the amounts withheld from fund payments made for the year ended 30 June pursuant to Subdivision 12-H and Subdivision 12A-B of Schedule 1 of the Taxation Administration Act 1953. Otherwise Tax may be payable per section s276-105 of the Income Tax Assessment Act 1997.

\* **Cost Base Net Amount** - Cost Base Net Amount is an estimation of the adjustment to the unitholder's cost base assuming that the unitholder held the units for the full year and assuming that the unitholder is a resident individual for the income year and is not entitled to any tax exemption in relation to the income.

If you have any questions or would like more information about your investment, contact your financial adviser or visit our Investor Portal, <https://australianunitywealth.unitregistry.com.au/funds/public/login/au/investor>. Alternatively, you can call our Client Services team on 1300 997 774 or +61 3 9616 8687 from 8.30am to 5.30pm AEDT or email [australianunitywealth@unitregistry.com.au](mailto:australianunitywealth@unitregistry.com.au)

Your Wealth Team - Australian Unity



# SHSM Super Fund

## Dividend Reconciliation Report

For The Period 01 July 2021 - 30 June 2022

Date	Net Payment Received	Australian Income			Foreign Income			Withheld		
		Unfranked	Franked	Franking Credits	Foreign Income	Foreign Credits	NZ Credits	TFN Withheld	Non-Resident	LIC Deduction
	181.24				181.24	32.03				
NVDA.NDQ NVIDIA Corp - Ordinary Shares										
28/09/2021	0.46				0.46	0.08				
18/01/2022	0.46				0.46	0.08				
30/03/2022	0.45				0.45	0.08				
	1.37				1.37	0.24				
	<b>264.90</b>				<b>264.90</b>	<b>46.95</b>				
<b>TOTAL</b>	<b>264.90</b>				<b>264.90</b>	<b>46.95</b>				

### Tax Return Reconciliation

	Totals	Tax Return Label
Unfranked		J
Franked Dividends		K
Franking Credits		L

# INTERNATIONAL DIVIDENDS

1 July 2021 - 30 June 2022

**Account number**      **Account type**  
 NT2002292-004      Trading Account - Intl (AUD)

## International Dividends as at 30 June 2022

Date	Description	Foreign Credit in AuD	Value (AUD)
02/07/2021	DIVIDEND on GILD.US (WHT of USD -6.18) - USD to AUD @ 1.3223	8.28	\$46.28
08/09/2021	DIVIDEND on HL.US (WHT of USD -1.16) - USD to AUD @ 1.3384	1.57	\$8.78
08/09/2021	DIVIDEND on HL.US (WHT of USD -0.58) - USD to AUD @ 1.3384	0.79	\$4.39
28/09/2021	DIVIDEND on NVDA.US (WHT of USD -0.06) - USD to AUD @ 1.3529	0.08	\$0.46
12/10/2021	DIVIDEND on MRK.US (WHT of USD -11.31) - USD to AUD @ 1.3598	15.39	\$87.15
08/12/2021	DIVIDEND on HL.US (WHT of USD -0.58) - USD to AUD @ 1.4146	0.81	\$4.64
08/12/2021	DIVIDEND on HL.US (WHT of USD -0.39) - USD to AUD @ 1.4147	0.55	\$3.07
12/01/2022	DIVIDEND on MRK.US (WHT of USD -12.01) - USD to AUD @ 1.3831	16.64	\$94.09
18/01/2022	DIVIDEND on NVDA.US (WHT of USD -0.06) - USD to AUD @ 1.3529	0.08	\$0.46
24/03/2022	DIVIDEND on HL.US (WHT of USD -0.39) - USD to AUD @ 1.3440	0.52	\$2.93
25/03/2022	DIVIDEND on HL.US (WHT of USD -0.58) - USD to AUD @ 1.3293	0.77	\$4.36
30/03/2022	DIVIDEND on NVDA.US (WHT of USD -0.06) - USD to AUD @ 1.3235	0.08	\$0.45
17/06/2022	DIVIDEND on HL.US (WHT of USD -0.39) - USD to AUD @ 1.4358	0.56	\$3.13
17/06/2022	DIVIDEND on HL.US (WHT of USD -0.58) - USD to AUD @ 1.4360	0.83	\$4.71

## Reserve Bank of Australia

## Foregin Income - SHSM Super Fund

	A	B	C	D	E	F
1	Date	Investment	USD Ex Price	USD - WHT	AUD = Foregin Income	AUD - WHT
2	2/07/2021	GILD.US	0.7466	6.1800	46.2800	8.28
3	8/09/2021	HL.US	0.7384	1.1600	8.7800	1.57
4	8/09/2021	HL.US	0.7384	0.5800	4.3900	0.79
5	28/09/2021	NVDA.US	0.7310	0.0600	0.4600	0.08
6	12/10/2021	MRK.US	0.7349	11.3100	87.1500	15.39
7	8/12/2021	HL.US	0.7133	0.5800	4.6400	0.81
8	8/12/2021	HL.US	0.7133	0.3900	3.0700	0.55
9	12/01/2022	MRK.US	0.7218	12.0100	94.0900	16.64
10	18/01/2022	NVDA.US	0.7195	0.0600	0.4600	0.08
11	24/03/2022	HL.US	0.7473	0.3900	2.9300	0.52
12	25/03/2022	HL.US	0.7526	0.5800	4.3600	0.77
13	30/03/2022	NVDA.US	0.7527	0.0600	0.4500	0.08
14	17/06/2022	HL.US	0.7012	0.3900	3.1300	0.56
15	17/06/2022	HL.US	0.7012	0.5800	4.7100	0.83



# SHSM Super Fund General Ledger

As at 30 June 2022

Transaction Date	Description	Units	Debit	Credit	Balance \$
<b>Interest Received (25000)</b>					
NAB Trade a/c 303329989 (NABTRA989)					
30/07/2021	INTEREST			0.03	0.03 CR
31/08/2021	INTEREST			0.05	0.08 CR
31/01/2022	INTEREST			0.32	0.40 CR
28/02/2022	INTEREST			0.56	0.96 CR
31/03/2022	INTEREST			0.66	1.62 CR
29/04/2022	INTEREST			0.16	1.78 CR
31/05/2022	INTEREST			0.64	2.42 CR
30/06/2022	INTEREST			0.80	3.22 CR
				<b>3.22</b>	<b>3.22 CR</b>

**Total Debits: 0.00**

**Total Credits: 3.22**

## SHSM Super Fund

# Market Movement Report

As at 30 June 2022

Investment	Date	Description	Unrealised				Realised			Total
			Units	Accounting Cost Movement	Market Movement	Depreciation	Balance	Consideration	Accounting Cost Base	
AKE.AX - Allkem Limited										
	06/12/2021	Code/Class Change	1,830.00	9,973.95	0.00	0.00	9,973.95	0.00	0.00	0.00
	30/06/2022	Revaluation	0.00	0.00	8,893.35	0.00	18,867.30	0.00	0.00	0.00
	<b>30/06/2022</b>		<b>1,830.00</b>	<b>9,973.95</b>	<b>8,893.35</b>	<b>0.00</b>	<b>18,867.30</b>	<b>0.00</b>	<b>0.00</b>	<b>0.00</b>
AUS0112AU - Aust Unity Hcare Prop Trst Wsale Un										
	01/07/2021	Opening Balance	17,260.53	0.00	0.00	0.00	39,095.11	0.00	0.00	0.00
	30/06/2022	Revaluation	0.00	0.00	7,404.76	0.00	46,499.87	0.00	0.00	0.00
	<b>30/06/2022</b>		<b>17,260.53</b>	<b>0.00</b>	<b>7,404.76</b>	<b>0.00</b>	<b>46,499.87</b>	<b>0.00</b>	<b>0.00</b>	<b>0.00</b>
CPH.AX - Creso Pharma Limited										
	01/07/2021	Opening Balance	1,000.00	0.00	0.00	0.00	140.00	0.00	0.00	0.00
	30/06/2022	Revaluation	0.00	0.00	(105.00)	0.00	35.00	0.00	0.00	0.00
	<b>30/06/2022</b>		<b>1,000.00</b>	<b>0.00</b>	<b>(105.00)</b>	<b>0.00</b>	<b>35.00</b>	<b>0.00</b>	<b>0.00</b>	<b>0.00</b>
CPHO.AX1 - Creso Pharma Limited Options Expiring 02-Nov-2024										
	29/10/2021	Purchase	334.00	0.00	0.00	0.00	0.00	0.00	0.00	0.00
	30/06/2022	Revaluation	0.00	0.00	1.67	0.00	1.67	0.00	0.00	0.00
	<b>30/06/2022</b>		<b>334.00</b>	<b>0.00</b>	<b>1.67</b>	<b>0.00</b>	<b>1.67</b>	<b>0.00</b>	<b>0.00</b>	<b>0.00</b>
GILD.NDQ6 - Gilead Sciences, Inc.										
	01/07/2021	Opening Balance	58.00	0.00	0.00	0.00	5,312.42	0.00	0.00	0.00
	26/07/2021	Disposal	(58.00)	(7,106.53)	0.00	0.00	(1,794.11)	5,349.15	7,106.53	(1,757.38)
	26/07/2021	Writeback	0.00	0.00	1,794.11	0.00	0.00	0.00	0.00	0.00
	<b>30/06/2022</b>		<b>0.00</b>	<b>(7,106.53)</b>	<b>1,794.11</b>	<b>0.00</b>	<b>0.00</b>	<b>5,349.15</b>	<b>7,106.53</b>	<b>(1,757.38)</b>
GLD.NYE3 - SPDR Gold Trust Shs										
	01/07/2021	Opening Balance	47.00	0.00	0.00	0.00	10,354.63	0.00	0.00	0.00
	18/08/2021	Disposal	(23.00)	(5,916.63)	0.00	0.00	4,438.00	5,169.61	5,916.63	(747.02)
	18/08/2021	Writeback	0.00	0.00	825.96	0.00	5,263.96	0.00	0.00	0.00
	30/06/2022	Revaluation	0.00	0.00	604.88	0.00	5,868.84	0.00	0.00	0.00
	<b>30/06/2022</b>		<b>24.00</b>	<b>(5,916.63)</b>	<b>1,430.84</b>	<b>0.00</b>	<b>5,868.84</b>	<b>5,169.61</b>	<b>5,916.63</b>	<b>(747.02)</b>
GXY.AX - Galaxy Resources Limited										
	01/07/2021	Opening Balance	1,695.00	0.00	0.00	0.00	6,220.65	0.00	0.00	0.00
	25/08/2021	Merger	(1,695.00)	(4,998.25)	0.00	0.00	1,222.40	4,979.50	4,998.25	(18.75)
	25/08/2021	Writeback	0.00	0.00	(1,222.40)	0.00	0.00	0.00	0.00	0.00
	<b>30/06/2022</b>		<b>0.00</b>	<b>(4,998.25)</b>	<b>(1,222.40)</b>	<b>0.00</b>	<b>0.00</b>	<b>4,979.50</b>	<b>4,998.25</b>	<b>(18.75)</b>

## SHSM Super Fund

## Market Movement Report

As at 30 June 2022

Investment	Date	Description	Unrealised				Realised			Total
			Units	Accounting Cost Movement	Market Movement	Depreciation	Balance	Consideration	Accounting Cost Base	
HEPA.NDQ2 - Hepion Pharmaceuticals Inc										
	01/07/2021	Opening Balance	348.00	0.00	0.00	0.00	916.53	0.00	0.00	0.00
	24/01/2022	Purchase	1,652.00	2,460.31	0.00	0.00	3,376.84	0.00	0.00	0.00
	30/06/2022	Revaluation	0.00	0.00	(1,714.84)	0.00	1,662.00	0.00	0.00	0.00
	<b>30/06/2022</b>		<b>2,000.00</b>	<b>2,460.31</b>	<b>(1,714.84)</b>	<b>0.00</b>	<b>1,662.00</b>	<b>0.00</b>	<b>0.00</b>	<b>0.00</b>
HL.NYE4 - Hecla Mining Co.										
	01/07/2021	Opening Balance	1,028.00	0.00	0.00	0.00	10,173.29	0.00	0.00	0.00
	30/06/2022	Revaluation	0.00	0.00	(4,323.76)	0.00	5,849.53	0.00	0.00	0.00
	<b>30/06/2022</b>		<b>1,028.00</b>	<b>0.00</b>	<b>(4,323.76)</b>	<b>0.00</b>	<b>5,849.53</b>	<b>0.00</b>	<b>0.00</b>	<b>0.00</b>
INO.NDQ3 - Inovio Pharmaceuticals Inc										
	01/07/2021	Opening Balance	748.00	0.00	0.00	0.00	9,223.14	0.00	0.00	0.00
	24/01/2022	Disposal	(748.00)	(4,933.47)	0.00	0.00	4,289.67	4,219.33	4,933.47	(714.14)
	24/01/2022	Writeback	0.00	0.00	(4,289.67)	0.00	0.00	0.00	0.00	0.00
	<b>30/06/2022</b>		<b>0.00</b>	<b>(4,933.47)</b>	<b>(4,289.67)</b>	<b>0.00</b>	<b>0.00</b>	<b>4,219.33</b>	<b>4,933.47</b>	<b>(714.14)</b>
MRK.NYE - Merck & Co Inc - Ordinary Shares										
	02/08/2021	Purchase	38.00	4,038.78	0.00	0.00	4,038.78	0.00	0.00	0.00
	18/08/2021	Purchase	7.00	753.54	0.00	0.00	4,792.32	0.00	0.00	0.00
	20/08/2021	Purchase	71.00	7,810.78	0.00	0.00	12,603.10	0.00	0.00	0.00
	13/01/2022	Disposal	(116.00)	(12,603.10)	0.00	0.00	0.00	13,018.17	12,603.10	415.07
	<b>30/06/2022</b>		<b>0.00</b>	<b>0.00</b>	<b>0.00</b>	<b>0.00</b>	<b>0.00</b>	<b>13,018.17</b>	<b>12,603.10</b>	<b>415.07</b>
NTL.AX - New Talisman Gold Mines Limited										
	01/07/2021	Opening Balance	65,670.00	0.00	0.00	0.00	197.01	0.00	0.00	0.00
	30/06/2022	Revaluation	0.00	0.00	(98.50)	0.00	98.51	0.00	0.00	0.00
	<b>30/06/2022</b>		<b>65,670.00</b>	<b>0.00</b>	<b>(98.50)</b>	<b>0.00</b>	<b>98.51</b>	<b>0.00</b>	<b>0.00</b>	<b>0.00</b>
NVDA.NDQ13 - NVIDIA Corp - Ordinary Shares										
	27/07/2021	Purchase	20.00	5,377.73	0.00	0.00	5,377.73	0.00	0.00	0.00
	20/08/2021	Disposal	(10.00)	(2,688.87)	0.00	0.00	2,688.86	2,655.74	2,688.87	(33.13)
	30/06/2022	Revaluation	0.00	0.00	(488.39)	0.00	2,200.47	0.00	0.00	0.00
	<b>30/06/2022</b>		<b>10.00</b>	<b>2,688.86</b>	<b>(488.39)</b>	<b>0.00</b>	<b>2,200.47</b>	<b>2,655.74</b>	<b>2,688.87</b>	<b>(33.13)</b>
ORE.AX - Orocobre Limited										
	01/07/2021	Opening Balance	866.00	0.00	0.00	0.00	5,603.02	0.00	0.00	0.00
	25/08/2021	Merger	964.00	4,979.50	0.00	0.00	10,582.52	0.00	0.00	0.00
	06/12/2021	Code/Class Change	(1,830.00)	0.00	0.00	0.00	10,582.52	0.00	0.00	0.00

## SHSM Super Fund

## Market Movement Report

As at 30 June 2022

Investment	Date	Description	Unrealised				Realised			Total
			Units	Accounting Cost Movement	Market Movement	Depreciation	Balance	Consideration	Accounting Cost Base	
	06/12/2021	Code/Class Change	0.00	(9,973.95)	0.00	0.00	608.57	9,973.95	9,973.95	0.00
	30/06/2022	Revaluation	0.00	0.00	(608.57)	0.00	0.00	0.00	0.00	0.00
	<b>30/06/2022</b>		<b>0.00</b>	<b>(4,994.45)</b>	<b>(608.57)</b>	<b>0.00</b>	<b>0.00</b>	<b>9,973.95</b>	<b>9,973.95</b>	<b>0.00</b>
PLS.AX - Pilbara Minerals Limited										
	01/07/2021	Opening Balance	5,620.00	0.00	0.00	0.00	8,149.00	0.00	0.00	0.00
	30/06/2022	Revaluation	0.00	0.00	4,720.80	0.00	12,869.80	0.00	0.00	0.00
	<b>30/06/2022</b>		<b>5,620.00</b>	<b>0.00</b>	<b>4,720.80</b>	<b>0.00</b>	<b>12,869.80</b>	<b>0.00</b>	<b>0.00</b>	<b>0.00</b>
REX.AX - Regional Express Holdings Limited										
	01/07/2021	Opening Balance	613.00	0.00	0.00	0.00	726.41	0.00	0.00	0.00
	30/07/2021	Disposal	(613.00)	(1,099.96)	0.00	0.00	(373.55)	739.04	1,099.96	(360.92)
	30/07/2021	Writeback	0.00	0.00	373.55	0.00	0.00	0.00	0.00	0.00
	<b>30/06/2022</b>		<b>0.00</b>	<b>(1,099.96)</b>	<b>373.55</b>	<b>0.00</b>	<b>0.00</b>	<b>739.04</b>	<b>1,099.96</b>	<b>(360.92)</b>
SLV.NYE4 - BlackRock Institutional Trust Company N.A. - BTC iShares Silver Trust										
	01/07/2021	Opening Balance	198.00	0.00	0.00	0.00	6,378.77	0.00	0.00	0.00
	18/08/2021	Disposal	(98.00)	(2,432.53)	0.00	0.00	3,946.24	2,904.72	2,432.53	472.19
	18/08/2021	Writeback	0.00	0.00	(724.64)	0.00	3,221.60	0.00	0.00	0.00
	30/06/2022	Revaluation	0.00	0.00	(515.84)	0.00	2,705.76	0.00	0.00	0.00
	<b>30/06/2022</b>		<b>100.00</b>	<b>(2,432.53)</b>	<b>(1,240.48)</b>	<b>0.00</b>	<b>2,705.76</b>	<b>2,904.72</b>	<b>2,432.53</b>	<b>472.19</b>
TTT.ARCX1 - ProShares Trust - ProShares UltraPro Short 20+ Year Treasury -3x Shares										
	25/01/2022	Purchase	110.00	5,200.59	0.00	0.00	5,200.59	0.00	0.00	0.00
	30/06/2022	Revaluation	0.00	0.00	4,019.04	0.00	9,219.63	0.00	0.00	0.00
	<b>30/06/2022</b>		<b>110.00</b>	<b>5,200.59</b>	<b>4,019.04</b>	<b>0.00</b>	<b>9,219.63</b>	<b>0.00</b>	<b>0.00</b>	<b>0.00</b>
<b>Total Market Movement</b>					<b>14,546.51</b>				<b>(2,744.08)</b>	<b>11,802.43</b>

$$11,820.43 + 1,070.00 = 12,872.43$$

# SHSM Super Fund General Ledger

As at 30 June 2022

Transaction Date	Description	Units	Debit	Credit	Balance \$
<b>Changes in Market Values of Other Assets (24800)</b>					
<u>Changes in Market Values of Other Assets (24800)</u>					
30/06/2022	Sundry Creditors Set off			1,070.00	1,070.00 CR
				<b>1,070.00</b>	<b>1,070.00 CR</b>

**Total Debits: 0.00**

**Total Credits: 1,070.00**

SHSM Super Fund

# Realised Capital Gains Report

For The Period 01 July 2021 - 30 June 2022

Investment		Accounting Treatment				Tax Treatment						
Purchase Contract Date	Disposal Contract Date	Units	Cost	Proceeds	Accounting Profit/(Loss)	Adjusted Cost Base	Reduced Cost Base	Indexed Cost Base	Indexed Gains	Discounted Gains (Gross)	Other Gains	Capital Loss
<b>Managed Investments (Australian)</b>												
AUS0112AU - Aust Unity Hcare Prop Trst Wsale Un												
		0.00	0.00	0.00	0.00	0.00	0.00	0.00	0.00	15.98	0.00	0.00
		<b>0.00</b>	<b>0.00</b>	<b>0.00</b>	<b>0.00</b>	<b>0.00</b>	<b>0.00</b>	<b>0.00</b>	<b>0.00</b>	<b>15.98</b>	<b>0.00</b>	<b>0.00</b>
		<b>0.00</b>	<b>0.00</b>	<b>0.00</b>	<b>0.00</b>	<b>0.00</b>	<b>0.00</b>	<b>0.00</b>	<b>0.00</b>	<b>15.98</b>	<b>0.00</b>	<b>0.00</b>
<b>Shares in Listed Companies (Australian)</b>												
GXY.AX - Galaxy Resources Limited												
09/03/2018	25/08/2021	1,695.00	4,998.25	4,979.50	(18.75)	4,998.25	4,998.25	0.00	0.00	0.00	0.00	(18.75)
		<b>1,695.00</b>	<b>4,998.25</b>	<b>4,979.50</b>	<b>(18.75)</b>	<b>4,998.25</b>	<b>4,998.25</b>	<b>0.00</b>	<b>0.00</b>	<b>0.00</b>	<b>0.00</b>	<b>(18.75)</b>
REX.AX - Regional Express Holdings Limited												
04/03/2021	30/07/2021	613.00	1,099.96	739.04	(360.92)	1,099.96	1,099.96	0.00	0.00	0.00	0.00	(360.92)
		<b>613.00</b>	<b>1,099.96</b>	<b>739.04</b>	<b>(360.92)</b>	<b>1,099.96</b>	<b>1,099.96</b>	<b>0.00</b>	<b>0.00</b>	<b>0.00</b>	<b>0.00</b>	<b>(360.92)</b>
		<b>2,308.00</b>	<b>6,098.21</b>	<b>5,718.54</b>	<b>(379.67)</b>	<b>6,098.21</b>	<b>6,098.21</b>	<b>0.00</b>	<b>0.00</b>	<b>0.00</b>	<b>0.00</b>	<b>(379.67)</b>
<b>Shares in Listed Companies (Overseas)</b>												
GILD.NDQ6 - Gilead Sciences, Inc.												
14/04/2020	26/07/2021	20.00	2,399.58	1,844.53	(555.05)	2,399.58	2,399.58	0.00	0.00	0.00	0.00	(555.05)
30/03/2020	26/07/2021	19.00	2,354.15	1,752.31	(601.84)	2,354.15	2,354.15	0.00	0.00	0.00	0.00	(601.84)
27/03/2020	26/07/2021	19.00	2,352.80	1,752.31	(600.49)	2,352.80	2,352.80	0.00	0.00	0.00	0.00	(600.49)
		<b>58.00</b>	<b>7,106.53</b>	<b>5,349.15</b>	<b>(1,757.38)</b>	<b>7,106.53</b>	<b>7,106.53</b>	<b>0.00</b>	<b>0.00</b>	<b>0.00</b>	<b>0.00</b>	<b>(1,757.38)</b>
GLD.NYE3 - SPDR Gold Trust Shs												
14/04/2020	18/08/2021	23.00	5,916.63	5,169.61	(747.02)	5,916.63	5,916.63	0.00	0.00	0.00	0.00	(747.02)

## SHSM Super Fund

## Realised Capital Gains Report

For The Period 01 July 2021 - 30 June 2022

Investment		Accounting Treatment				Tax Treatment						
Purchase Contract Date	Disposal Contract Date	Units	Cost	Proceeds	Accounting Profit/(Loss)	Adjusted Cost Base	Reduced Cost Base	Indexed Cost Base	Indexed Gains	Discounted Gains (Gross)	Other Gains	Capital Loss
<b>Shares in Listed Companies (Overseas)</b>												
		<b>23.00</b>	<b>5,916.63</b>	<b>5,169.61</b>	<b>(747.02)</b>	<b>5,916.63</b>	<b>5,916.63</b>	<b>0.00</b>	<b>0.00</b>	<b>0.00</b>	<b>0.00</b>	<b>(747.02)</b>
INO.NDQ3 - Inovio Pharmaceuticals Inc												
28/02/2020	24/01/2022	748.00	4,933.47	4,219.33	(714.14)	4,933.47	4,933.47	0.00	0.00	0.00	0.00	(714.14)
		<b>748.00</b>	<b>4,933.47</b>	<b>4,219.33</b>	<b>(714.14)</b>	<b>4,933.47</b>	<b>4,933.47</b>	<b>0.00</b>	<b>0.00</b>	<b>0.00</b>	<b>0.00</b>	<b>(714.14)</b>
MRK.NYE - Merck & Co Inc - Ordinary Shares												
20/08/2021	13/01/2022	71.00	7,810.78	7,968.02	157.24	7,810.78	7,810.78	0.00	0.00	0.00	157.24	0.00
18/08/2021	13/01/2022	7.00	753.54	785.58	32.04	753.54	753.54	0.00	0.00	0.00	32.04	0.00
02/08/2021	13/01/2022	38.00	4,038.78	4,264.57	225.79	4,038.78	4,038.78	0.00	0.00	0.00	225.79	0.00
		<b>116.00</b>	<b>12,603.10</b>	<b>13,018.17</b>	<b>415.07</b>	<b>12,603.10</b>	<b>12,603.10</b>	<b>0.00</b>	<b>0.00</b>	<b>0.00</b>	<b>415.07</b>	<b>0.00</b>
NVDA.NDQ13 - NVIDIA Corp - Ordinary Shares												
27/07/2021	20/08/2021	10.00	2,688.87	2,655.74	(33.13)	2,688.87	2,688.87	0.00	0.00	0.00	0.00	(33.13)
		<b>10.00</b>	<b>2,688.87</b>	<b>2,655.74</b>	<b>(33.13)</b>	<b>2,688.87</b>	<b>2,688.87</b>	<b>0.00</b>	<b>0.00</b>	<b>0.00</b>	<b>0.00</b>	<b>(33.13)</b>
SLV.NYE4 - BlackRock Institutional Trust Company N.A. - BTC iShares Silver Trust												
19/05/2020	18/08/2021	98.00	2,432.53	2,904.72	472.19	2,432.53	2,432.53	0.00	0.00	472.19	0.00	0.00
		<b>98.00</b>	<b>2,432.53</b>	<b>2,904.72</b>	<b>472.19</b>	<b>2,432.53</b>	<b>2,432.53</b>	<b>0.00</b>	<b>0.00</b>	<b>472.19</b>	<b>0.00</b>	<b>0.00</b>
		<b>1,053.00</b>	<b>35,681.13</b>	<b>33,316.72</b>	<b>(2,364.41)</b>	<b>35,681.13</b>	<b>35,681.13</b>	<b>0.00</b>	<b>0.00</b>	<b>472.19</b>	<b>415.07</b>	<b>(3,251.67)</b>
		<b>3,361.00</b>	<b>41,779.34</b>	<b>39,035.26</b>	<b>(2,744.08)</b>	<b>41,779.34</b>	<b>41,779.34</b>	<b>0.00</b>	<b>0.00</b>	<b>488.17</b>	<b>415.07</b>	<b>(3,631.34)</b>

# INTERNATIONAL TRANSACTIONS

1 July 2021 - 30 June 2022

## International Transactions as at 30 June 2022

Date	Code	Description	Type	Quantity	Price (Exch CCY)	Brokerage (AUD)	Settlement Amount (AUD)	Contract Note
22/07/2021	GILD.NAS	GILEAD SCIENCES ORD Common Stock	SELL	-58	\$68.67	\$19.95	-\$5,349.15	93798902
23/07/2021	NVDA.NAS	NVIDIA ORD Common Stock	BUY	20	\$195.80	\$19.95	\$5,377.73	93876252
29/07/2021	MRK.NYS	MERCK & CO ORD Common Stock	BUY	38	\$77.50	\$14.95	\$4,038.78	94194871
16/08/2021	SLV.ARC	iShares Silver Trust Exchange Traded Fund	SELL	-98	\$22.02	\$14.95	-\$2,904.72	95310807
16/08/2021	MRK.NYS	MERCK & CO ORD Common Stock	BUY	7	\$76.75	\$14.95	\$753.54	95310521
16/08/2021	GLD.ARC	SPDR? Gold Shares Exchange Traded Fund	SELL	-23	\$166.70	\$19.95	-\$5,169.61	95308553
18/08/2021	MRK.NYS	MERCK & CO ORD Common Stock	BUY	71	\$78.83	\$19.95	\$7,810.78	95500261
18/08/2021	NVDA.NAS	NVIDIA ORD Common Stock	SELL	-10	\$195.15	\$14.95	-\$2,655.74	95500505
11/01/2022	MRK.NYS	MERCK & CO ORD Common Stock	SELL	-116	\$81.53	\$19.95	-\$13,018.17	104217554
20/01/2022	HEPA.NAS	HEPION PHARMACEUTICALS ORD Common Stock	BUY	1,652	\$1.06	\$14.95	\$2,460.31	104836680
20/01/2022	INO.NAS	INOVIO PHARMACEUTICALS ORD Common Stock	SELL	-748	\$4.12	\$14.95	-\$4,219.33	104836594
21/01/2022	TTT.ARC	ProShares UltraPro Short 20+ Year Trs Exchange Traded Fund	BUY	110	\$33.66	\$19.95	\$5,200.59	104946166



## Domestic Transactions as at 30 June 2022

Date	Code	Description	Type	Quantity	Price	Brokerage	Settlement Amount	Contract Note
28/07/2021	REX.ASX	REGIONAL EXPRESS HOLDINGS LIMITED ORDINARY FULLY PAID	SELL	-613	\$1.23	\$13.59	-\$739.04	94068419
25/08/2021	GXY.ASX	GALAXY RESOURCES LIMITED ORDINARY FULLY PAID	SOA - Scheme of Arrangement	-1,695	\$0.00	\$0.00	\$0.00	
25/08/2021	ORE.ASX	OROCOBRE LIMITED ORDINARY FULLY PAID	SOA - Scheme of Arrangement	964	\$0.00	\$0.00	\$0.00	
29/10/2021	CPHO.ASX	CRESO PHARMA LIMITED OPTION EXPIRING 02-NOV-2024	BONUS ISSUE	334	\$0.00	\$0.00	\$0.00	
06/12/2021	AKE.ASX	ALLKEM LIMITED ORDINARY FULLY PAID	CHANGE SECURITY CODE	1,830	\$2.72	\$0.00	\$4,979.50	
06/12/2021	ORE.ASX	OROCOBRE LIMITED ORDINARY FULLY PAID	CHANGE SECURITY CODE	-1,830	-\$2.72	\$0.00	-\$4,979.50	

# SHSM Super Fund General Ledger

As at 30 June 2022

Transaction Date	Description	Units	Debit	Credit	Balance \$
<b>Contributions (24200)</b>					
<i>(Contributions) Choung, Su Mi - Accumulation (CHOSU 00001A)</i>					
26/07/2021	PC06C045-6078037 Superchoice P/L 395276			866.40	866.40 CR
26/08/2021	PC06C044-6088414 Superchoice P/L 395276			912.00	1,778.40 CR
24/09/2021	PC06C043-6098722 Superchoice P/L 395276			1,140.00	2,918.40 CR
29/10/2021	PC06C045-6109675 Superchoice P/L 395276			912.00	3,830.40 CR
26/11/2021	PC06C047-6118490 Superchoice P/L 395276			1,183.90	5,014.30 CR
31/01/2022	PC06C046-6133646 Superchoice P/L 395276			791.02	5,805.32 CR
04/02/2022	PC06C045-6136400 Superchoice P/L 395276			912.00	6,717.32 CR
25/02/2022	PC06C047-6140324 Superchoice P/L 395276			1,263.00	7,980.32 CR
26/04/2022	PC120422-182232359 Superchoice P/L 481471			994.90	8,975.22 CR
11/05/2022	PC090522-125927662 Superchoice P/L 481471			2,128.48	11,103.70 CR
12/05/2022	PC100522-126083946 Superchoice P/L 481471			1,038.48	12,142.18 CR
21/06/2022	PC200622-116740909 Superchoice P/L 481471			1,305.62	13,447.80 CR
				<b>13,447.80</b>	<b>13,447.80 CR</b>
<i>(Contributions) Jeong, Sung Hyun - Accumulation (JEOSUN00001A)</i>					
29/07/2021	QUICKSPR3014920288 Quicksuper 361578			1,594.59	1,594.59 CR
29/09/2021	QUICKSPR3054576645 Quicksuper 361578			782.61	2,377.20 CR
31/01/2022	QUICKSPR3134277154 Quicksuper 361578			782.61	3,159.81 CR
29/04/2022	QUICKSPR3195568626 Quicksuper 361578			1,682.70	4,842.51 CR
				<b>4,842.51</b>	<b>4,842.51 CR</b>
<b>Total Debits:</b>	<b>0.00</b>				
<b>Total Credits:</b>	<b>18,290.31</b>				

# SHSM Super Fund Contributions Summary Report

For The Period 01 July 2021 - 30 June 2022

---

## Su Mi Choung

Date of Birth:	Provided
Age:	45 (at year end)
Member Code:	CHOSU 00001A
Total Super Balance* <sup>1</sup> as at 30/06/2021:	51,504.05

<b>Contributions Summary</b>	<b>2022</b>	<b>2021</b>
<b>Concessional Contribution</b>		
Employer	13,447.80	9,357.32
	<hr/>	<hr/>
	13,447.80	9,357.32
	<hr/>	<hr/>
<b>Total Contributions</b>	<hr/> <b>13,447.80</b> <hr/>	<hr/> <b>9,357.32</b> <hr/>

I, SU MI CHOUNG, confirm that the amounts reported above are the total contributions deposited to the fund with respect of my member balance for the period 01/07/2021 to 30/06/2022.

---

SU MI CHOUNG

\*1 TSB can include information external to current fund's transaction records. The amount is per individual across all funds.

---

**SHSM Super Fund**  
**Contributions Summary Report**

For The Period 01 July 2021 - 30 June 2022

---

**Sung Hyun Jeong**

Date of Birth:	Provided
Age:	43 (at year end)
Member Code:	JEOSUN00001A
Total Super Balance*1 as at 30/06/2021:	51,655.20

<b>Contributions Summary</b>	<b>2022</b>	<b>2021</b>
<b>Concessional Contribution</b>		
Employer	4,842.51	5,634.27
	<hr/>	<hr/>
	4,842.51	5,634.27
	<hr/>	<hr/>
<b>Total Contributions</b>	<b>4,842.51</b>	<b>5,634.27</b>

I, SUNG HYUN JEONG, confirm that the amounts reported above are the total contributions deposited to the fund with respect of my member balance for the period 01/07/2021 to 30/06/2022.

---

SUNG HYUN JEONG

\*1 TSB can include information external to current fund's transaction records. The amount is per individual across all funds.

---

**SHSM Super Fund**

**SuperStream Contribution Data Report**

For The Period 01 July 2021 - 30 June 2022

Transaction Date	Reference	Employer Org	Pay Period	Employer	Personal - NCC	Spouse & Child	Other Family & Friends	Any Other	Total
<b>Chung, Su Mi</b>									
26/07/2021	PC06C045-6078037	GREENCROSS GROUP SUPER - GREENCROSS VETS	01/06/2021 - 30/06/2021	866.40	0.00	0.00	0.00	0.00	866.40
26/08/2021	PC06C044-6088414	GREENCROSS GROUP SUPER - GREENCROSS VETS	01/07/2021 - 31/07/2021	912.00	0.00	0.00	0.00	0.00	912.00
24/09/2021	PC06C043-6098722	GREENCROSS GROUP SUPER - GREENCROSS VETS	01/08/2021 - 31/08/2021	1,140.00	0.00	0.00	0.00	0.00	1,140.00
29/10/2021	PC06C045-6109675	GREENCROSS GROUP SUPER - GREENCROSS VETS	01/09/2021 - 30/09/2021	912.00	0.00	0.00	0.00	0.00	912.00
26/11/2021	PC06C047-6118490	GREENCROSS GROUP SUPER - GREENCROSS VETS	01/10/2021 - 31/10/2021	1,183.90	0.00	0.00	0.00	0.00	1,183.90
31/01/2022	PC06C046-6133646	GREENCROSS GROUP SUPER - GREENCROSS VETS	01/12/2021 - 31/12/2021	791.02	0.00	0.00	0.00	0.00	791.02
04/02/2022	PC06C045-6136400	GREENCROSS GROUP SUPER - GREENCROSS VETS	01/12/2021 - 01/12/2021	912.00	0.00	0.00	0.00	0.00	912.00
25/02/2022	PC06C047-6140324	GREENCROSS GROUP SUPER - GREENCROSS VETS	01/01/2022 - 31/01/2022	1,263.00	0.00	0.00	0.00	0.00	1,263.00
26/04/2022	PC120422-182232359	Greencross Limited	31/01/2022 - 27/02/2022	994.90	0.00	0.00	0.00	0.00	994.90
11/05/2022	PC090522-125927662	Greencross Limited	28/02/2022 - 27/03/2022	2,128.48	0.00	0.00	0.00	0.00	2,128.48
12/05/2022	PC100522-126083946	Greencross Limited	28/03/2022 - 24/04/2022	1,038.48	0.00	0.00	0.00	0.00	1,038.48
21/06/2022	PC200622-116740909	Greencross Limited	25/04/2022 - 29/05/2022	1,305.62	0.00	0.00	0.00	0.00	1,305.62
				<b>13,447.80</b>	<b>0.00</b>	<b>0.00</b>	<b>0.00</b>	<b>0.00</b>	<b>13,447.80</b>
<b>Jeong, Sung Hyun</b>									
29/07/2021	QUICKSPR3014920288	FAIR GO FINANCIAL SERVICES PTY LTD	01/04/2021 - 30/06/2021	1,594.59	0.00	0.00	0.00	0.00	1,594.59
29/09/2021	QUICKSPR3054576645	FAIR GO FINANCIAL SERVICES PTY LTD	01/07/2021 - 30/09/2021	782.61	0.00	0.00	0.00	0.00	782.61

**SHSM Super Fund**

**SuperStream Contribution Data Report**

For The Period 01 July 2021 - 30 June 2022

Transaction Date	Reference	Employer Org	Pay Period	Employer	Personal - NCC	Spouse & Child	Other Family & Friends	Any Other	Total
31/01/2022	QUICKSPR3134277154	FAIR GO FINANCIAL SERVICES PTY LTD	01/10/2021 - 31/12/2021	782.61	0.00	0.00	0.00	0.00	782.61
29/04/2022	QUICKSPR3195568626	FAIR GO FINANCIAL SERVICES PTY LTD	01/01/2022 - 31/03/2022	1,682.70	0.00	0.00	0.00	0.00	1,682.70
				4,842.51	0.00	0.00	0.00	0.00	4,842.51
				18,290.31	0.00	0.00	0.00	0.00	18,290.31

\*Data last updated: 21/07/2023

SHSM Super Fund  
**General Ledger**

As at 30 June 2022

Transaction Date	Description	Units	Debit	Credit	Balance \$
<b>Accountancy Fees (30100)</b>					
<u>Accountancy Fees (30100)</u>					
30/06/2022	Accountancy and Audit Fee Accrual		625.00		625.00 DR
			<b>625.00</b>		<b>625.00 DR</b>

**Total Debits: 625.00**

**Total Credits: 0.00**



# TAX INVOICE

SHSM Super

**Invoice Date**  
20 Jul 2022

**Invoice Number**  
INV-0964

**ABN**  
60 061 126 663

SuperHelp Australia  
PTY LTD  
PO Box 1906  
MACQUARIE  
CENTRE NSW 2113  
AUSTRALIA

Item	Description	Quantity	Unit Price	GST	Amount AUD
EOY	SMSF Annual Administration	1.00	1,100.00	10%	1,100.00
ADD INV	Additional Investments	3.00	25.00	10%	75.00
INCLUDES GST 10%					106.82
<b>TOTAL AUD</b>					1,175.00
Less Amount Paid					1,175.00
<b>AMOUNT DUE AUD</b>					<b>0.00</b>

[Link to Sundry Creditors](#)

Less : Audit Fee : 550.00

Accountancy Fee : 625.00

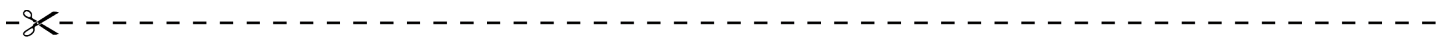
## Due Date: 3 Aug 2022

Please pay the balance of our fees by direct credit into our bank account.

OUR BANK DETAILS (Use your name or your SMSF name as the reference):

Account Name: Superhelp Australia Pty Ltd  
Bank: Commonwealth Bank  
BSB: 06 2099  
Account Number: 1041 7929





# PAYMENT ADVICE

To: SuperHelp Australia PTY LTD  
PO Box 1906  
MACQUARIE CENTRE NSW 2113  
AUSTRALIA

**Customer** SHSM Super  
**Invoice Number** INV-0964

---

**Amount Due** **0.00**  
**Due Date** 3 Aug 2022

---

**Amount Enclosed**

---

Enter the amount you are paying above

SHSM Super Fund  
**General Ledger**

As at 30 June 2022

Transaction Date	Description	Units	Debit	Credit	Balance \$
<b>Auditor's Remuneration (30700)</b>					
Auditor's Remuneration (30700)					
30/06/2022	Audit Fee		550.00		550.00 DR
			<b>550.00</b>		<b>550.00 DR</b>

**Total Debits: 550.00**

**Total Credits: 0.00**



# TAX INVOICE

SHSM Super Fund

**Invoice Date**  
27 Jul 2022

**Invoice Number**  
INV-15289

**ABN**  
81 523 295 035

YML Super Solutions  
PO Box 800  
BONDI JUNCTION  
NSW 1355  
Ph (02) 8383 4440  
www.ymlgroup.com.au

Description	GST	Amount AUD
Professional charges for Audit Service for the Financial Year ended 30 June 2021.	10%	500.00
	Subtotal	500.00
	TOTAL GST 10%	50.00
	<b>TOTAL AUD</b>	<b>550.00</b>

## Due Date: 3 Aug 2022

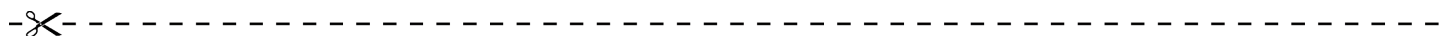
ACCTPRO Financial Services P/L trading as YML Super Solutions

Account Name: ACCTPRO Financial Services P/L

BSB: 082-140

Account Number: 772982366

Please include the Invoice Number as the Reference



# PAYMENT ADVICE

To: YML Super Solutions  
PO Box 800  
BONDI JUNCTION  
NSW 1355  
Ph (02) 8383 4440  
www.ymlgroup.com.au

**Customer** SHSM Super Fund  
**Invoice Number** INV-15289

**Amount Due** 550.00  
**Due Date** 3 Aug 2022

**Amount Enclosed**

Enter the amount you are paying above

**SHSM Super Fund**  
**General Ledger**

As at 30 June 2022

Transaction Date	Description	Units	Debit	Credit	Balance \$
<b>ASIC Fees (30800)</b>					
ASIC Fees (30800)					
29/12/2021	Internet Bpay Asic 2296233979469		56.00		56.00 DR
			<b>56.00</b>		<b>56.00 DR</b>

**Total Debits: 56.00**

**Total Credits: 0.00**



**ASIC**  
Australian Securities & Investments Commission

**Inquiries**  
www.asic.gov.au/invoices  
1300 300 630

ABN 86 768 265 615

SHSM PTY LTD  
23 CARCOOLA CRES NORMANHURST NSW 2076

**INVOICE STATEMENT**

Issue date 13 Dec 21

**SHSM PTY LTD**

ACN 623 397 946

Account No. 22 623397946

**Summary**

Opening Balance	\$0.00
New items	\$56.00
Payments & credits	\$0.00
<b>TOTAL DUE</b>	<b>\$56.00</b>

- Amounts are not subject to GST. (Treasurer's determination - exempt taxes, fees and charges).
- Payment of your annual review fee will maintain your registration as an Australian company.

*Transaction details are listed on the back of this page*

**Please pay**

Immediately	<b>\$0.00</b>
By 13 Feb 22	<b>\$56.00</b>

*If you have already paid please ignore this invoice statement.*

- Late fees will apply if you do NOT
  - tell us about a change during the period that the law allows
  - bring your company or scheme details up to date within 28 days of the date of issue of the annual statement, or
  - pay your review fee within 2 months of the annual review date.
- Information on late fee amounts can be found on the ASIC website.



**ASIC**  
Australian Securities & Investments Commission

**PAYMENT SLIP**  
SHSM PTY LTD

**PAID**

ACN 623 397 946      Account No: 22 623397946



22 623397946

<b>TOTAL DUE</b>	<b>\$56.00</b>
Immediately	<del>\$0.00</del>
By 13 Feb 22	<b>\$56.00</b> ✓

*Payment options are listed on the back of this payment slip*



**Billers Code:** 17301  
**Ref:** 2296233979469

29.12.21  
NAB  
B803129618



\*814 129 0002296233979469 46

# Transaction details:

	Transactions for this period	ASIC reference	\$ Amount
2021-12-13	Annual Review - Special Purpose Pty Co	3X8781403480P A	\$56.00
	<b>Outstanding transactions</b>		
2021-12-13	Annual Review - Special Purpose Pty Co	3X8781403480P A	\$56.00

## PAYMENT OPTIONS



Billpay Code: 8929  
Ref: 2296 2339 7946 946

### Australia Post

Present this payment slip. Pay by cash, cheque or EFTPOS

### Phone

Call 13 18 16 to pay by Mastercard or Visa

### On-line

Go to [postbillpay.com.au](http://postbillpay.com.au) to pay by Mastercard or Visa

### Mail

Mail this payment slip and cheque (do not staple) to ASIC,  
Locked Bag 5000, Gippsland Mail Centre VIC 3841



Biller Code: 17301  
Ref: 2296233979469

### Telephone & Internet Banking – bPAY®

Contact your bank or financial institution to make this payment from your cheque, savings, debit, credit card or transaction account. More info: [www.bpay.com.au](http://www.bpay.com.au)

# SHSM Super Fund General Ledger

As at 30 June 2022

Transaction Date	Description	Units	Debit	Credit	Balance \$
<b>Life Insurance Premiums (39000)</b>					
<u>(Life Insurance Premiums) Chung, Su Mi - Accumulation (CHOSU 00001A)</u>					
06/09/2021	02970982/00001 Asteron Life 367806		715.54		715.54 DR
			<b>715.54</b>		<b>715.54 DR</b>
<u>(Life Insurance Premiums) Jeong, Sung Hyun - Accumulation (JEOSUN00001A)</u>					
26/08/2021	02970982/00001 Asteron Life 367806		1,440.74		1,440.74 DR
			<b>1,440.74</b>		<b>1,440.74 DR</b>

**Total Debits: 2,156.28**

**Total Credits: 0.00**



# Asteron Life Complete Statement



I- 000049 000



Shsm Pty Ltd  
Shsm Super Fund  
23 Carcoola Cres  
NORMANHURST NSW 2076

4 August 2021

Dear Policy Owner

This is your insurance policy statement.

Your policy provides the opportunity to increase your cover from the upcoming policy anniversary to protect against inflation. The table on the reverse of this notice shows the cover and premium details if you wish to accept or decline the increase. The account from which it will be deducted is shown below.

As premiums are being deducted from your account **there is no need to send any payment.**

We take this opportunity to thank you for allowing us to provide your valuable cover. Asteron Life has a proud history of providing protection and financial security and we look forward to continuing our association with you for years to come.

If you wish to decline the increase in cover please contact us. We'll be happy to help.

Yours sincerely  
Asteron Life Customer Service

## Policy Number/Linked Policy

81499546/81499548

**Cover**  
Life  
TPD

**Insured Person**  
Dr Su Mi Choung

**Policy Owner**  
Shsm Super Fund


### Important Dates

- Policy anniversary  
4 September each year
- Policy commencement  
04/09/2018


### Your Adviser

Mr Sung Jeong  
0433 505 320

### Customer Service

 1800 221 727 8am-6pm  
07 3325 8500

### Internet

 [www.asteronlife.com.au](http://www.asteronlife.com.au)

► See your Policy Benefits and Features over

Amount debited from your National Australia Bank Ltd.  
Carlingford account ending with the numbers 223 each  
year.

**\$784.76**

Asteron Life & Superannuation Limited ABN 87 073 979 530, AFSL 229880 (Asteron) is part of the TAL Dai-ichi Life Australia Pty Limited ABN 97 150 070 483 group of companies (TAL). The obligations of the different entities of TAL are not guaranteed by other entities.

**Customer Service** GPO Box 68, Sydney NSW 2001  
Ph: 1800 221 727 or 07 3325 8500 8am to 6pm EST  
Fax: 1300 766 833  
Email: [life\\_customerservice@asteronlife.com.au](mailto:life_customerservice@asteronlife.com.au)  
Web: [www.asteronlife.com.au](http://www.asteronlife.com.au)



Asteron Life Complete  
Statement

Policy Number

81499546

Benefits and Features

- Level Premium to Age 70
- Guaranteed Future Insurability
- Flexible Policy Linking & Split TPD

Benefit Table

	If you decline Automatic Increase		If you accept Automatic Increase		Expiry Date
	Sum Insured	Yearly Premium	Sum Insured	Yearly Premium	
Life Cover	\$347,287	\$320.85	\$364,651	\$350.86	04/09/2076
Linked TPD - Split TPD any occupation definition	\$347,287	\$300.59	\$364,651	\$339.80	04/09/2042
Policy Fee		\$94.10		\$94.10	
<b>Total</b>		<b>\$715.54</b>		<b>\$784.76</b>	

\* Please note, your Policy is subject to revised terms, if you require full details regarding these terms please refer to your original Policy Schedule and Document.

Amount received from your financial institution  
 \$784.76

Financial institution details and contact information for the policyholder.

# Asteron Life Complete Statement



000157 000



Shsm Pty Ltd  
Shsm Super Fund  
16 Telopea Avenue  
STRATHFIELD NSW 2135

## Policy Number/Linked Policy

81499549/81499550

**Cover**  
Life  
TPD


**Insured Person**  
Mr Sung Hyun Jeong

**Policy Owner**  
Shsm Super Fund


**Important Dates**  
- Policy anniversary  
25 August each year  
- Policy commencement  
25/08/2018

**Your Adviser**  
Mr Christopher March  
1300366510

## Customer Service

 1800 221 727 8am-6pm  
07 3325 8500

## Internet

 [www.asteronlife.com.au](http://www.asteronlife.com.au)

26 July 2021

Dear Policy Owner

This is your insurance policy statement.

Your policy provides the opportunity to increase your cover from the upcoming policy anniversary to protect against inflation. The table on the reverse of this notice shows the cover and premium details if you wish to accept or decline the increase. The account from which it will be deducted is shown below.

As premiums are being deducted from your account **there is no need to send any payment.**

We take this opportunity to thank you for allowing us to provide your valuable cover. Asteron Life has a proud history of providing protection and financial security and we look forward to continuing our association with you for years to come.

If you wish to decline the increase in cover please contact us. We'll be happy to help.

Yours sincerely  
Asteron Life Customer Service

► See your Policy Benefits and Features over

Amount debited from your National Australia Bank Ltd.  
Carlingford account ending with the numbers 223 each  
year.

**\$1,440.74**

Asteron Life & Superannuation Limited ABN 87 073 979 530, AFSL 229880 (Asteron) is part of the TAL Dai-ichi Life Australia Pty Limited ABN 97 150 070 483 group of companies (TAL). The obligations of the different entities of TAL are not guaranteed by other entities.

**Customer Service** GPO Box 68, Sydney NSW 2001  
Ph: 1800 221 727 or 07 3325 8500 8am to 6pm EST  
Fax: 1300 766 833  
Email: [life\\_customerservice@asteronlife.com.au](mailto:life_customerservice@asteronlife.com.au)  
Web: [www.asteronlife.com.au](http://www.asteronlife.com.au)

Asteron Life Complete  
Statement

Policy Number

81499549

Benefits and Features

<ul style="list-style-type: none"><li>• Level Premium to Age 70</li><li>• Guaranteed Future Insurability</li></ul>	<ul style="list-style-type: none"><li>• Flexible Policy Linking &amp; Split TPD</li></ul>
--	---

Benefit Table

	If you decline Automatic Increase		If you accept Automatic Increase		Expiry Date
	Sum Insured	Yearly Premium	Sum Insured	Yearly Premium	
Life Cover	\$810,337	\$820.36	\$850,854	\$893.22	25/08/2078
Linked TPD - Split TPD any occupation definition	\$578,812	\$405.75	\$607,753	\$453.42	25/08/2044
Policy Fee		\$94.10		\$94.10	
<b>Total</b>		<b>\$1,320.21</b>		<b>\$1,440.74</b>	

81499549

not valid for... National Australia Bank Ltd... ending with the numbers 228 020...

not valid for... National Australia Bank Ltd... ending with the numbers 228 020... The obligations of the... not guaranteed by other entities... Customer Service Box 98, Sydney NSW 2001... Tel: 1800 321 721 or 02 9228 6800 8am to 6pm EST... Fax: 1800 96 813... Email: life.products@naabank.com.au... Web: www.naabank.com.au



# SHSM Super Fund General Ledger

As at 30 June 2022

Transaction Date	Description	Units	Debit	Credit	Balance \$
<b>Income Tax Payable/Refundable (85000)</b>					
<u>Income Tax Payable/Refundable (85000)</u>					
01/07/2021	Opening Balance				461.19 CR
01/10/2021	Internet Bpay Tax Office Payments 4759814281255360		623.00		161.81 DR
29/12/2021	Internet Bpay Tax Office Payments 4759814281255360		623.00		784.81 DR
31/03/2022	PAYG		623.00		1,407.81 DR
30/06/2022	PAYG		623.00		2,030.81 DR
30/06/2022	Create Entries - Foreign Credits Adjustment - 30/06/2022		46.95		2,077.76 DR
30/06/2022	Create Entries - Income Tax Expense - 30/06/2022			2,344.05	266.29 CR
			<b>2,538.95</b>	<b>2,344.05</b>	<b>266.29 CR</b>

**Total Debits: 2,538.95**

**Total Credits: 2,344.05**

**SHSM Superannuation Fund**  
**Details for Income Tax Payable / (Refund)**

---

The tax payable as at June 30, 2022 comprises of the following:

Tax Payable (Cr.) / Tax Receivable (Dr.) for the Financial Year 2021-22	(195) Cr
Add / Less: Tax Payable (Cr.) / Tax Receivable (Dr.) for 2020-21	<u>461 Cr</u>
Balance as at June 30, 2022 (Tied up to the Financial Statements)	<u><u>266 Cr</u></u>

---

**Movement in the income tax payable/ refund receivable account is as follows: (All debits to be indicated in brackets)**

Opening Balance as at July 1, 2021 (Payable (Cr.) / Receivable (Dr.))	461 Cr
Add / Less: Tax paid in the current year relating to previous financial years.	-
Add: Current year Tax Liability as per the <b>Statement of Taxable Income.</b>	2,344 Cr
Less: Tax instalments in the current year	(2,492)
Less: Imputed Credits (to tie up with detailed Investment Income Report)	-
Less: Foreign Credits (to tie up with detailed Investment Income Report)	(47) Dr
Less: TFN Credits (to tie up with detailed Investment Income Report)	-
Add / Less: Refund Adjustments (excess income tax paid in respect of earlier years)	-
Add / Less: Adjustments in respect of ATO Levy	-
Add/Less: GIC Paid	-
Balance as at June 30, 2022	<u><u>266 Cr</u></u>

---

**Installments Raised**

Installment I - (September Quarter)	(623) Dr
Installment II - (December Quarter)	(623) Dr
Installment III - (March Quarter)	(623) Dr
Installment IV - (June Quarter)	<u>(623) Dr</u>
<b>Total installments raised (To be entered in CE screen in BGL and tie with Tax return)</b>	<u><u>(2,492) Dr</u></u>

Less: Installments raised but not paid	
Installment IV - (March & June Quarter)	1,246 Cr

<b>Total installments paid and taken to Income Tax Account.</b>	<u><u>(1,246) Dr</u></u>
---	--------------------------

---

**Tax expenses**

Current Tax (as per statement of taxable income)	2,344 Cr
Deferred Tax Movement	1,234 Cr
Prior Year Adjustment	-
Less: Imputed Credits & Foreign Credits	(47) Dr
To tie up in the Financial Statements (Operating Statement)	<u><u>3,532 Cr</u></u>

**SHSM Super Fund**  
**Statement of Taxable Income**

For the year ended 30 June 2022

	<b>2022</b>
	<b>\$</b>
Benefits accrued as a result of operations	29,729.07
<b>Less</b>	
Other Non Taxable Income	1,070.00
Increase in MV of investments	14,546.51
Realised Accounting Capital Gains	(2,744.08)
Accounting Trust Distributions	1,685.49
	<u>14,557.92</u>
<b>Add</b>	
Foreign Credits	46.95
Taxable Trust Distributions	410.26
	<u>457.21</u>
SMSF Annual Return Rounding	(1.36)
	<u>15,627.00</u>
<b>Taxable Income or Loss</b>	<u>15,627.00</u>
Income Tax on Taxable Income or Loss	2,344.05
<b>Less</b>	
Foreign Credits	46.95
	<u>2,297.10</u>
<b>CURRENT TAX OR REFUND</b>	<u>2,297.10</u>
Supervisory Levy	259.00
Income Tax Instalments Paid	(2,492.00)
<b>AMOUNT DUE OR REFUNDABLE</b>	<u>64.10</u>
	<u>Less : Levy = 259.00</u>
	-----
	FY22 Tax = (194.90)



**Australian Government**  
**Australian Taxation Office**

**Agent** SUPERHELP AUSTRALIA PTY LTD  
**Client** THE TRUSTEE FOR SHSM SUPER  
 FUND  
**ABN** 75 981 428 125  
**TFN** 495 063 602

## Income tax 002

<b>Date generated</b>	07 July 2023
<b>Overdue</b>	\$0.00
<b>Not yet due</b>	\$0.00
<b>Balance</b>	\$0.00

## Transactions

4 results found - from **07 July 2021** to **07 July 2023** sorted by **processed date** ordered **newest to oldest**

Processed date	Effective date	Description	Debit (DR)	Credit (CR)	Balance
3 Aug 2022	3 Aug 2022	General interest charge			\$0.00
3 Aug 2022	2 Aug 2022	Payment received		\$720.19	\$0.00
1 Aug 2022	1 Jul 2022	General interest charge			\$720.19 DR
27 Jul 2022	14 Jun 2022	Tax return Self Man Superfund - Income Tax for the period from 01 Jul 20 to 30 Jun 21	\$720.19		\$720.19 DR



## Activity statement 004

<b>Date generated</b>	07 July 2023
<b>Overdue</b>	\$0.00
<b>Not yet due</b>	\$0.00
<b>Balance</b>	\$454.00 CR

## Transactions

30 results found - from **01 May 2021** to **07 July 2023** sorted by **processed date** ordered **newest to oldest**

Processed date	Effective date	Description	Debit (DR)	Credit (CR)	Balance
6 Jul 2023	5 Jul 2023	Payment received		\$454.00	\$454.00 CR
30 Apr 2023	30 Apr 2023	General interest charge			\$0.00
30 Apr 2023	28 Apr 2023	Original Activity Statement for the period ending 31 Mar 23 - PAYG Instalments	\$454.00		\$0.00
28 Mar 2023	27 Mar 2023	Payment received		\$454.00	\$454.00 CR
5 Mar 2023	5 Mar 2023	General interest charge			\$0.00
5 Mar 2023	28 Feb 2023	Original Activity Statement for the period ending 31 Dec 22 - PAYG Instalments	\$454.00		\$0.00
22 Dec 2022	21 Dec 2022	Payment received		\$454.00	\$454.00 CR
30 Oct 2022	30 Oct 2022	General interest charge			\$0.00
30 Oct 2022	28 Oct 2022	Original Activity Statement for the period ending 30 Sep 22 - PAYG Instalments	\$454.00		\$0.00
6 Oct 2022	5 Oct 2022	Payment received		\$454.00	\$454.00 CR
26 Aug 2022	26 Aug 2022	General interest charge			\$0.00
26 Aug 2022	25 Aug 2022	Payment received		\$623.00	\$0.00
1 Aug 2022	1 Aug 2022	General interest charge			\$623.00 DR



Processed date	Effective date	Description	Debit (DR)	Credit (CR)	Balance
31 Jul 2022	28 Jul 2022	Original Activity Statement for the period ending 30 Jun 22 - PAYG Instalments	\$623.00		\$623.00 DR
8 Jul 2022	8 Jul 2022	General interest charge			\$0.00
8 Jul 2022	7 Jul 2022	Payment received		\$623.00	\$0.00
2 May 2022	2 May 2022	General interest charge			\$623.00 DR
1 May 2022	28 Apr 2022	Original Activity Statement for the period ending 31 Mar 22 - PAYG Instalments	\$623.00		\$623.00 DR
12 Apr 2022	12 Apr 2022	General interest charge			\$0.00
12 Apr 2022	11 Apr 2022	Payment received		\$330.00	\$0.00
7 Mar 2022	7 Mar 2022	General interest charge			\$330.00 DR
7 Mar 2022	28 Feb 2022	Original Activity Statement for the period ending 31 Dec 21 - PAYG Instalments	\$623.00		\$330.00 DR
4 Jan 2022	4 Jan 2022	General interest charge			\$293.00 CR
4 Jan 2022	29 Dec 2021	Payment received		\$623.00	\$293.00 CR
31 Oct 2021	31 Oct 2021	General interest charge			\$330.00 DR
31 Oct 2021	28 Oct 2021	Original Activity Statement for the period ending 30 Sep 21 - PAYG Instalments	\$623.00		\$330.00 DR
4 Oct 2021	1 Oct 2021	Payment received		\$623.00	\$293.00 CR
2 Aug 2021	2 Aug 2021	General interest charge			\$330.00 DR
1 Aug 2021	28 Jul 2021	Original Activity Statement for the period ending 30 Jun 21 - PAYG Instalments	\$330.00		\$330.00 DR
2 May 2021	28 Apr 2021	Original Activity Statement for the period ending 31 Mar 21 - PAYG Instalments	\$330.00		\$0.00



Australian Government  
Australian Taxation Office

## PAYG Instalments report 2022

**Tax Agent** 72357001  
**Last Updated** 01/07/2023

<b>TFN</b>	<b>Client Name</b>	<b>Quarter 1 (\$)</b>	<b>Quarter 2 (\$)</b>	<b>Quarter 3 (\$)</b>	<b>Quarter 4 (\$)</b>	<b>Total Instalment (\$)</b>
495063602	THE TRUSTEE FOR SHSM SUPER FUND	623.00	623.00	623.00	623.00	2,492.00

**Total No of Clients: 1**

# Fund Name: SHSM Super Fund

Year Ended: 30th June 2022

Dear Steven,

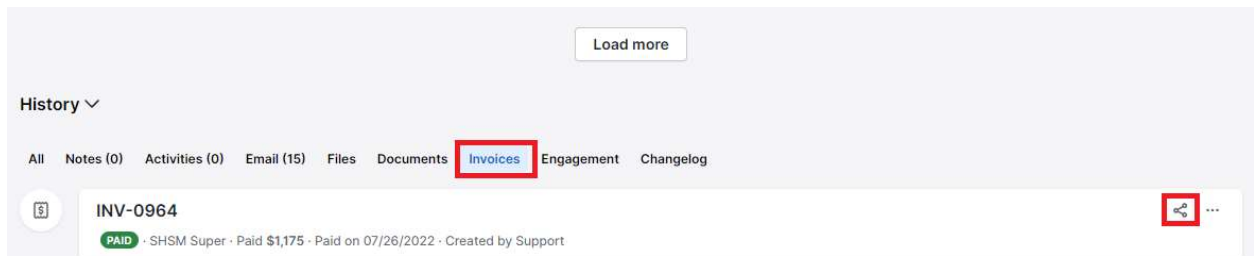
We have completed processing the fund and require the following information to proceed further:

1. Provide SuperHelp Invoice #0964 for \$1,175.00 paid on 26/07/2022 to accrue it as creditors.
2. The opening balance of \$1,070.00 in sundry creditors related is still outstanding.
3. "Australian Unity Healthcare Prop Trust" - We have accounted the difference between the distribution income received in bank \$1,251.39 and income as per ATS \$1,685.49 as distribution receivable. This is highlighted for your information.

Thanks and regards,  
Rakesh

## Steven's response

1. SH fee invoice – I believe you have access to Pipedrive. Go to SHSM Super EOY 2021, invoices tab and you'll be able to download the invoice.



The screenshot shows the Pipedrive interface. At the top, there is a "Load more" button. Below it, the "History" section is visible with a dropdown arrow. The navigation bar includes "All", "Notes (0)", "Activities (0)", "Email (15)", "Files", "Documents", "Invoices" (highlighted with a red box), "Engagement", and "Changelog". The main content area displays a single invoice entry: "INV-0964" with a status of "PAID" (indicated by a green dot) and details: "SHSM Super - Paid \$1,175 - Paid on 07/26/2022 - Created by Support". A red box highlights the share icon and the three-dot menu icon on the right side of the invoice entry.

2. Sundry creditors – Looks like this is an error entry made by the accountant. Let's just write it off.