

Property Profile Report

4 Annie Street Caboolture QLD 4510

Prepared on 04 January 2022

Prepared by reaa26@rpdata.com

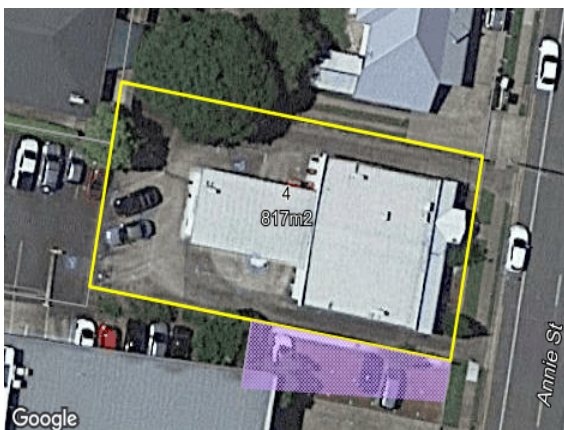


4 Annie Street Caboolture QLD 4510

-	-	8	200m ²	817m ²

Property Details

Lot/Plan	L3 RP13949	Property Type	Commercial
Year Built	-	Council Area	Moreton Bay Regional - Caboolture
Zone	780, LOCAL CENTRE - PRECINCT D(C)	Land Use Primary	Professional Offices



4 Annie Street Caboolture QLD 4510






Estimated Value


An estimate is not available for this property. There is either insufficient subject property information, recent sales or the property is considered to be out of scope i.e. non-residential, highly unique or rural and an estimate cannot be confidently provided.

Property Activity Summary

Date	Activity	Value	Details
26 Mar 2018	Sold	\$870,000	Sale Method: Unknown, Sale Advised by: Government
27 Feb 2007	Sold	\$803,000	Sale Method: Unknown, Sale Advised by: Government
23 Nov 2006	For Sale	\$760,000	Campaign period: 23/11/2006 - 19/01/2007, Listing Type: Normal Sale, Listed by: David Fairfax, Metro First National, Days on market: 97
07 Sep 1994	Sold	\$290,000	Sale Method: Unknown, Sale Advised by: Government

Local School Details

	School Address	Distance	School Type	Gender	Sector	Enrolments
	Caboolture State School 12-16 George Street Caboolture QLD 4510	0.1km	Primary	Mixed	Government	558
	Caboolture State High School 1-57 Lee Street Caboolture QLD 4510	1.2km	Secondary	Mixed	Government	1248
	Horizons College of Learning and Enrichment 6-8 King Street Caboolture QLD 4510	0.5km	Special	Mixed	Non-Government	110
	Caboolture East State School -	1.2km	Primary	Mixed	Government	624
	Lee Street State Special School -	1.4km	Special	Mixed	Non-Government	-

 Property within school catchment

 Property outside school catchment (government)/no catchment applies (non-government)

Disclaimers

Copyright

This publication reproduces materials and content owned or licenced by RP Data Pty Ltd trading as CoreLogic Asia Pacific (CoreLogic) and may include data, statistics, estimates, indices, photographs, maps, tools, calculators (including their outputs), commentary, reports and other information (CoreLogic Data).

Standard Disclaimer

The CoreLogic Data provided in this publication is of a general nature and should not be construed as specific advice or relied upon in lieu of appropriate professional advice.

While CoreLogic uses commercially reasonable efforts to ensure the CoreLogic Data is current, CoreLogic does not warrant the accuracy, currency or completeness of the CoreLogic Data and to the full extent permitted by law excludes all loss or damage howsoever arising (including through negligence) in connection with the CoreLogic Data.

This publication contains data and statistics provided by the Australian Bureau of Statistics, available at <http://www.abs.gov.au/> and reproduced under Creative Commons Attribution 2.5 <http://creativecommons.org/licenses/by/2.5/au/legalcode>.

Mapping Data

Any map that is produced is not intended or designed to replace the certificate of title or land survey information. If you need a certificate of title or land survey information for any purpose then you can order these separately from CoreLogic or the relevant government body.

Development Approval Data

Any data or information containing development approval information (**Development Approval Data**) has been obtained from a variety of third party sources. The Development Approval Data: (a) is only available for about 60% of total building consents in Australia due to limitations with the collection of this data; (b) relies on the accuracy of the description against the Development Approval Data provided to CoreLogic by third parties; (c) may differ from the actual construction cost (where it contains an estimated construction cost) and (d) any errors in entry of property details may lead to incorrect Development Approval Data being provided and the recipient should always check the appropriateness of the information contained in the development approval report against the actual property or surrounding properties (including physical attributes of such property).

State and Territory Data

Based on or contains data provided by the State of Queensland (Department of Natural Resources and Mines) 2021. In consideration of the State permitting use of this data you acknowledge and agree that the State gives no warranty in relation to the data (including accuracy, reliability, completeness, currency or suitability) and accepts no liability (including without limitation, liability in negligence) for any loss, damage or costs (including consequential damage) relating to any use of the data. Data must not be used for direct marketing or be used in breach of the privacy laws; more information at www.propertydatacodeofconduct.com.au

Schools Data

Product Data licenced by CoreLogic under a Creative Commons Attribution licence. For details regarding licence, data source, copyright and disclaimers, see www.corelogic.com.au/aboutus/thirdpartyrestrictions.html All information relating to Schools provided by CoreLogic is as a courtesy only. CoreLogic does not make any representations regarding the accuracy or completeness of the data. You should contact the School directly to verify this information.

If you have any questions or concerns about the information in this report, please contact our customer care team.

Within Australia: **1300 734 318**
Email Us: **customercare@corelogic.com.au**